

Panasonic
BUSINESS

TOUGHBOOK 20 mk2
Solution Guide

TOUGHBOOK





TOUGHBOOK 20 TWO PARTS: ONE STORY

WINDOWS 10 PRO FULLY RUGGED DETACHABLE WITH 10.1" OUTDOOR FULL-HD DISPLAY

The Panasonic TOUGHBOOK 20 delivers a new level of unrivalled versatility for mobile business computing as a fully-rugged detachable notebook. Offering the best of all worlds for mobile workers, the TOUGHBOOK 20 can be used in 6 different modes to meet every business need. With its glove-enabled touchscreen, up to 17 hour hot-swappable battery life and purpose-built vehicle mount and desktop port replicator, the Panasonic TOUGHBOOK 20 is an unrivalled mobile business machine.

- Intel® Core™ i5-7Y57 vPro™ processor
- Windows 10 Pro
- Intel® HD Graphics 615
- Next generation IPS outdoor display technology
- 10.1" high brightness WUXGA (1920x1200) display (up to 800cd/m²)
- Capacitive 10 finger multi-touchscreen
- Optional IP55 Digitiser (Dual-touch model)
- 120cm drop resistant (main unit), water and dust resistant (IP65)*
- Windows Hello compliant front camera
- Up to 8.5 hours battery life (MobileMark™ 2014)
- Up to 17 hours battery life with second battery (MobileMark™ 2014)
- User exchangeable battery
- Hot Swap function
- Flexible configurations (serial, smartcard, 2D barcode reader, NFC)
- Lightweight design, weights approx. 1.89kg
- 3 years standard warranty

*Tested by an independent third party lab following MIL-STD-810G and IEC 60529, Sections 13.4, 13.6.2, 14.2.5 and 14.3



TOUGHBOOK 20 ACCESSORY ECOSYSTEM



All accessories in this guide are fully tested and certified in the Panasonic factory by Panasonic engineers

DOCKING SOLUTIONS

TOUGHBOOK 20 Desktop Port Replicator

With full port replication.

Size: 315mm x 270mm x 50mm

Weight: 1.6 kg

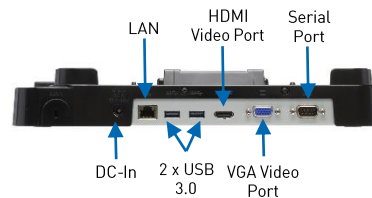
Part No: CF-VEB201U



Left side



2 x USB 2.0



Rear

TOUGHBOOK 20 Notebook Vehicle Dock (GJ)

Ruggedised vehicle dock with full port replication and optional dual antenna pass-through. Non-electronic version also available.

Full port replication:

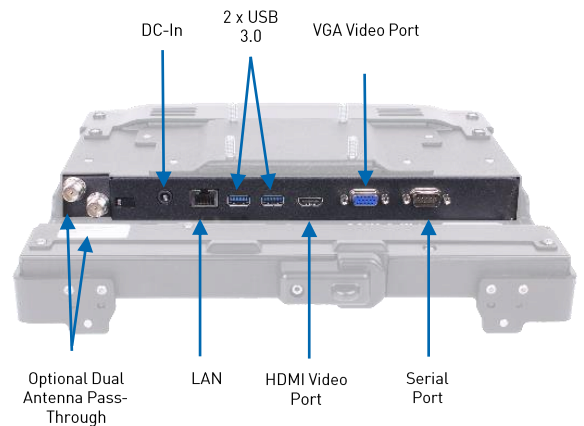
- 2 x USB 3.0; 1 x LAN; 1 x Serial; 1 x HDMI; 1 x VGA
- Optional dual antenna pass-through
- 16V DC-in

Size: 307 x 295 x 65 mm

Weight: 2.3 kg

Part Nos:

- PCPE-GJ20V07 No RF, keyed alike
- PCPE-GJ20V08 Dual RF, keyed alike



DOCKING SOLUTIONS

TOUGHBOOK 20 Notebook Dock (Havis)

Full port replication:

- 2 x USB 3.0; 1 x LAN; 1 x Serial; 1 x HDMI; 1 x VGA
- Optional dual antenna pass-through
- 16V DC-in

Size: 635 x 280 x 244 mm

Weight: 1.95 kg

Part No:

- PCPE-HAV2007 Without pass-through, keyed alike
- PCPE-HAV2008 With dual pass-through, keyed alike



TOUGHBOOK 20 Tablet Vehicle Dock – Slim Model

Reduced Port Replication:

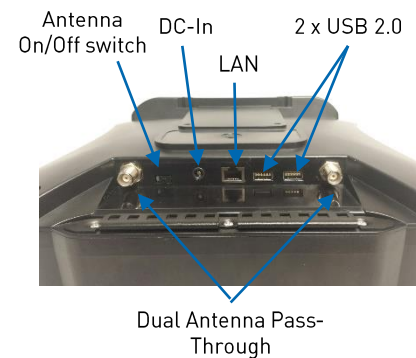
- 2 x USB 3.0
- 1 x LAN
- Optional Dual Antenna Pass-through
- 16V DC-In

Size: 297 x 269 x 76 mm

Weight: 1.0 kg / 2.1 lbs

Part Nos:

- PCPE-GJA2V01 Without pass-through, keyed alike
- PCPE-GJA2V02 With pass-through, keyed alike
- PCPE-GJA2V05 Non electronic, keyed alike



TOUGHBOOK 20 Tablet Vehicle Dock – Expanded Model

Reduced Port Replication (as above)

Size: 297 x 259 x 109 mm

Weight: 1.4 kg

Part Nos:

- PCPE-GJA2V06 Without pass-through, keyed alike
- PCPE-GJA2V07 With pass-through, keyed alike
- PCPE-GJA2V10 Non electronic, keyed alike



CARRYING SOLUTIONS

Panasonic Rotating X-Strap

Part Nos:

- CF-VST2011U – does not accommodate Magnet Stripe Reader



TOUGHBOOK 20 Tablet Rotating Hand Strap

Part No: PCPE-INF20H1



TOUGHBOOK 20 Always On Case

Size: 280 x 230 x 40mm

Weight: 375.3g

Part No: PCPE-INF20A0



TOUGHBOOK 20 Mobility Bundle

Contains shoulder strap and handle.

Part No: PCPE-INF20B1



TOUGHBOOK 20 Vehicle Holster

For temporary storage of laptops and tablets.

Dimensions: 326 x 293 x 48 mm

Weight: 588.8g

Part No: PCPE-SL20VH1



TOUGHBOOK 20 Tablet Case (Non Docking)

With screen flap and standard shoulder strap.

Size: 289 x 220 x 39 mm

Weight: 436g

Part No: PCPE-SYS1548



User Harness

Attaches to any TOUGHBOOK 20 case that provides 4 attachment points

Weight: 0.2 kg

Part No: PCPE-INFUVA1



All technical specifications are subject to change without notice.

CARRYING SOLUTIONS CONTINUED

Top Traveller PRO bag

Size: 410 x 300 x 170 mm
Weight: 1.4kg
Part No: PCPE-DCTBAG7



Synergy 15.4" Laptop Rucksack

Size: 254 x 330 x 460 mm
Weight: 1 kg
Part No: PCPE-WENSYN1



SECURITY & PROTECTION SOLUTIONS

LCD Screen Cleaning Cloth

Part No: CF-VNC002UU
MOQ: 10 pcs



LCD Protective Film

Replacement for protective film pre-installed on TOUGHBOOK 20
Part No: CF-VPF31U



Kensington Lock

Part No: PCPE-KENLOK1



MOBILE PRINT SOLUTIONS

PJ7 Series A4 Mobile Printers

Perfectly dimensioned for your briefcase or computer bag, PJ7 series of compact, direct thermal printers can also be easily mounted in your vehicle. Take it out on the road and make sure your clients and customers receive those all-important documents in an instant. Available with 300 dpi print resolution, and with USB, Bluetooth or Wi-Fi.

Part No.: PCPE-BRPJ763 PJ763 A4 mobile printer, 300 dpi with USB & Bluetooth
PCPE-BRPJ773 PJ773 A4 mobile printer, 300 dpi with USB, Wi-Fi and AirPrint



All technical specifications are subject to change without notice.

POWER MANAGEMENT SOLUTIONS

Li-ion Battery Pack

Part No: CF-VZSU0QW



4-bay Battery Charger

Includes AC adaptor (CF-AA5713A)

Part No: CF-VCB201*

*E: UK; G: EU; T: Italy; D: Switzerland



Car charger (12 - 16VDC)

EIAJ & TypeA both, 80W

Part No: CF-LND80S - FD/BW*

*FD: with vehicle plug; BW: bare wire



Car charger (12 - 32VDC)

EIAJ & TypeA both, 80W

Part No: CF-LND8024 FD/BW*

*FD: with vehicle plug; BW: bare wire



Replacement AC Power Supply

Standard, 65W

Part No: CF-AA6413A*

*E: UK; G: EU; T: Italy; D: Switzerland



Mil Spec Vehicle Charger

90W (11 to 32VDC)

Part No: CF-LNDMLSTD



Car Charger For Forklifts

Part Nos:

- PCPE-LNDFH11: 70-110V
- PCPE-LNDFH32: 12-32V
- PCPE-LNDFH60: 20-60VDC



Replacement AC Power Supply

Part No: CF-AA5713A2*

For MIL, 110W. For use with 4-bay Battery Charger

*E: UK; G: EU; T: Italy; D: Switzerland



All technical specifications are subject to change without notice.

PRODUCTIVITY SOLUTIONS

Replacement TOUGHBOOK 20 Digitiser Pen

IP55 rated.

Part No: CF-VNP023U



Replacement TOUGHBOOK 20 Pen

Part No: CF-VNP025U



Stylus Tether

Part No: PCPE-INFUVA2



USB External Disc Drive

Part No:

- PCPE-FCDVR06 - Blu-ray
- PCPE-FCDVR05 - CD/DVD



Mini Rugged Wireless Keyboard

With Bluetooth.

Part No: PCPE-ACDS*

*UK1: UK; FR1: French;
GR1: German



Mini Antibacterial Keyboard

Sealed IP67, Black

Part No: PCPE-ACCABK*

*1: UK; 3: FR; 4: DE



USB Mini Keyboard with Integrated Touchpad

Black, US English

Part No: PCPE-KEYB



Rugged USB Keyboard

Part No: PCPE-MMRK01*

*E: English; F: French; G:
German



All technical specifications are subject to change without notice.

PRODUCTIVITY SOLUTIONS

Compact Wearable Barcode Scanner

Part Nos:

- PCPE-PGLSCN1 – Standard Range
- PCPE-PGLSCN1 – Mid Range



Barcode Scanner Charging Cradle

With International plugs

Part No: PCPE-PGLCHR3



Index Trigger Wrap - 3 Pcs. Pack

Part Nos:

- PCPE-PGLITSL - Left Hand, Size Small
- PCPE-PGLITML - Left Hand, Size Medium
- PCPE-PGLITLL - Left Hand, Size Large
- PCPE-PGLITSR - Right Hand, Size Small
- PCPE-PGLITMR - Right Hand, Size Medium
- PCPE-PGLITLR - Right Hand, Size Large



Bluetooth Headset

Part No: PCPE-MODBTH1



Headset Battery Charger – 10 bay

Part No: PCPE-MOD10BC



Replaceable Batteries – 25 pack

Part No: PCPE-MODBAT1



All technical specifications are subject to change without notice.

PROFESSIONAL SERVICES

Custom BIOS Services

Part No: PCPE-PSBIO5G

Autopilot Enrolment

Part No: PCPE-PSAUTOP

SIM Installation

Part No: PCPE-PSSIMIN

Information Management Bundle

IMEI, MAC, SIM, ASSET, Hardware Hash reporting.

Part No: PCPE-PSATAGB

Solution Packaging

Up to 10 items packaged together in a box.

Does not include custom designed case.

Part No: PCPE-PSSPACK

Custom Imaging

Part Nos:

- PCPE-PS20GIM - Image deployment per device (MOQ 30)

- Custom Image Creation - Price on request.

Customer Branding

Logo badge on device casing or bezel.

Part No: PCPE-PSLOGOB

Asset Tagging

Standard, using CPE label set.

Part No: PCPE-PSATAG1

Custom Logistics

Part No: PCPE-PSCDL01

Price on Request.

All technical specifications are subject to change without notice.

LIFECYCLE SUPPORT SOLUTIONS

Extended Warranty

Panasonic's Extended Warranty provides an additional two years of warranty, helping you to minimise repair costs and maximise the life cycle of your Toughbook or TOUGHBOOK.

Part No.: CF-LESPEW* *4 / 5

Accidental Damage Warranty

Panasonic's Accidental Damage Warranty provides protection against any eventuality out in the field for up to 5 years, providing you and your workforce with complete peace of mind.

Part No.: CF-LESPAD* *3 / 4 / 5 (4 & 5 year options include Extended Warranty)

Smart Battery Warranty

Smart Service Lite battery analytics, powered by B2M, monitor device battery health in real-time. Smart Service Lite will alert you when batteries deployed in the field reach a low capacity level so a replacement battery can be sent out in advance.

Part No.: CF-LESPBASS* *3 / 4 / 5

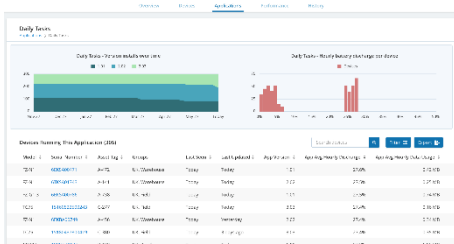


All technical specifications are subject to change without notice.

SMART ESSENTIALS



TOUGHBOOK Smart Service

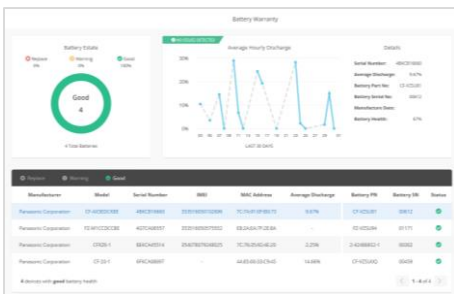


Real time analytics, powered by B2M Solutions, showing the health and performance of your estate of mobile devices, focussing on areas such as battery life, data usage, disruptions and connectivity. Enables the user to recognise patterns of usage and potentially pre-empt issues before they arise.

Part Nos.:

- **CF-LESPSSM3** 3 year Smart Service self-managed licence
- **CF-LESPSSM5** 5 year Smart Service self-managed licence

Smart Battery Monitor

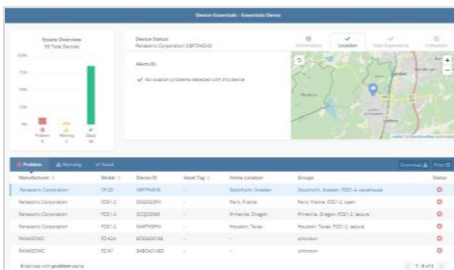


An additional “Smart” module that monitors battery usage and health in detail, focusing on battery serial numbers, the software allows the customer to track, identify and replace batteries before they impact productivity. With dashboard access and alerts.

Part Nos.:

- **CF-LESPBAEE1** 1 year Smart Battery Monitor software licence
- **CF-LESPBAEE3** 3 year Smart Battery Monitor software licence
- **CF-LESPBAEE5** 5 year Smart Battery Monitor software licence

Smart Device Monitor



An additional “Smart” module that monitors device usage in more detail. Dashboard access provides information such as device location; user experience, including drop detection on Android devices and also enables alerts and geofences to be set up.

Part Nos.:

- **CF-LESPDAEE1** 1 year Smart Device Monitor software licence
- **CF-LESPDAEE3** 3 year Smart Device Monitor software licence
- **CF-LESPDAEE5** 5 year Smart Device Monitor software licence

All technical specifications are subject to change without notice.

SOFTWARE SOLUTIONS – PREMIER PARTNERS



Absolute Data and Device Security

Patented technology to centrally secure TOUGHBOOK devices for unrivalled endpoint security and data risk management.

Part numbers available upon request.

Website: <https://www.absolute.com/partners/oem/panasonic/>



NetMotion Mobility

More than just a VPN, "Mobility" Mobile Performance Management software can dynamically maintain access to applications through changing network conditions, allowing mobile workers to remain productive anywhere their work takes them. Diagnostics option also available.

Part numbers available upon request.

Website: <https://www.netmotionsoftware.com/products/mobility>



SOTI MobiControl

MobiControl is an Enterprise Mobility Management (EMM) solution with enhanced EMM features like application management, content management, location services and remote help.

Part numbers available upon request.

Website: <https://www.soti.net/products/soti-mobicontrol/>



Sygic

Sygic Professional GPS Navigation works offline and features truck specific routing, itinerary with time windows and over 60 APIs for development with Android and Windows based apps.

Part numbers available upon request.

Website: <https://www.sygic.com/enterprise/professional-gps-navigation-sdk>

For more info on these software solutions, please refer to the co-branded data sheet [here](#).

SOFTWARE SOLUTIONS – CERTIFIED PARTNERS



StayLinked

StayLinked's SmartTE software provides a cost-effective way to take advantage of touchscreen devices with Terminal Emulation by transforming traditional "green screen" application screens into easy-to-use, graphical screens with no changes to the underlying enterprise applications.

For more information or to request a demo, visit:
<https://www.staylinked.com/panasonic>



Loqus

Loqus Fleet Ltd specialises in the provision of end-to-end Transport management systems providing organisations with the necessary tools to help them Plan, Execute and Monitor & Control work orders from initial order taking down to the last mile. Headquartered in Malta, the group employs a passionate team of high calibre software engineers supported by an experienced management team

Visit website: <http://openfleet.loqusgroup.com/>



Acronis

Acronis sets the standard for cyber protection and hybrid cloud storage through its innovative backup, anti-ransomware, disaster recovery, storage, and enterprise file sync and share solutions. Enhanced by its award-winning AI-based active protection technology, blockchain-based authentication and unique hybrid-cloud architecture, Acronis protects all data in any environment – including physical, virtual, cloud, mobile workloads and applications – all at a low and predictable cost.

Visit website: <https://www.acronis.com>



GPC Systems

GPC is an award-winning software house with over 25 years of experience working with a range of sectors across the globe. Driven by the needs of their customers in healthcare, transportation, police, logistics and local government, GPC strives to improve outcomes through the most efficient use of resources. GPC has in-depth experience creating solutions utilising 3D cameras, including the Intel® RealSense™ technology integrated into the TOUGHBOOK M1.

Visit website: <https://www.gpcsl.com/>

All technical specifications are subject to change without notice.



ACCESSORY SUMMARY 1

Solution Type	Part Number	Description
Power Management	CF-VZSU0QW	Spare Battery Pack
	CF-VCB201*	4-bay Battery Charger
	CF-AA6413A	Replacement AC Power Supply (65W)
	CF-AA5713A*	Replacement AC Power Supply (110W)
	CF-LND80S-FD/BW	Car Charger (12-16VDC)
	CF-LND8024FD/BW	Car Charger (12-32VDC)
	PCPE-LNDAC01	AC/DC Combo Adaptor
	PCPE-LNDFH11	Car Charger for Forklifts (70-110V)
	PCPE-LNDFH32	Car Charger for Forklifts (12-32V)
	PCPE-LNDFH60	Car Charger for Forklifts (20-60VDC)
	CF-LNDMLSTD	Mil Spec Vehicle Charger
Security & Protection	PCPE-KENL0K1	Kensington Lock
	CF-VN002U	LCD Screen Cleaning Cloth
	CF-VPF31U	LCD Protective Film for TOUGHBOOK 20
Productivity	CF-VNP023U	Replacement TOUGHBOOK 20 Digitiser Pen
	CF-VNP025U	Replacement TOUGHBOOK 20 Pen
	PCPE-INFUVA2	Stylus Tether
	PCPE-MODBTH1	Bluetooth Headset
	PCPE-MOD10BC	Bluetooth Headset 10 Bay Charger
	PCPE-MODBAT1	Bluetooth Headset replaceable Batteries – 25 pack
	PCPE-FCDVR06	External USB Blu-Ray Drive
	PCPE-FCDVR05	External USB CD/DVD-RW Drive
	PCPE-ACCABK1/3/4	Mini Antibacterial Keyboard
	PCPE-ACDSUK1/FR1/GR1	Rugged Mini Bluetooth Keyboard
	PCPE-KEYB	USB Mini Keyboard with Integrated Touchpad
	PCPE-MMRK01E/G/G	Rugged USB Keyboard
Carrying Solutions	CF-VST2011U	Panasonic Rotating X-Hand Strap
	PCPE-INF20H1	TOUGHBOOK 20 Rotating Hand Strap
	PCPE-INF20A0	TOUGHBOOK 20 Always On Case
	PCPE-INF20B1	TOUGHBOOK 20 Tablet Mobility Bundle
	PCPE-SYS1548	TOUGHBOOK 20 Tablet Case (Non Docking)
	PCPE-INFUVA1	User Harness
	PCPE-SL20VH1	TOUGHBOOK 20 Vehicle Holster
	PCPE-WENSYN1	Synergy 15.4" Laptop Rucksack
	PCPE-DCTBAG7	Top Traveller PRO bag



ACCESSORY SUMMARY 2

Solution Type	Part Number	Description
Docking Solutions	CF-VEB201U	TOUGHBOOK 20 Desktop Port Replicator
	PCPE-GJ20V0 7/8/9	TOUGHBOOK 20 Notebook Vehicle Dock (GJ)
	PCPE-HAV2007/8	TOUGHBOOK 20 Notebook Vehicle Dock (Havis)
	PCPE-GJA2V* 01/02/03/04/05	TOUGHBOOK 20 Tablet Slim Vehicle Dock
	PCPE-GJA2V* 06/07	TOUGHBOOK 20 Tablet Expanded Vehicle Dock
Mobile Printing Solutions	PCPE-BRPJ763	PJ763 A4 mobile printer, 300 dpi with USB & Bluetooth
	PCPE-BRPJ773	PJ773 A4 mobile printer, 300 dpi with Wi-Fi & AirPrint
Barcode Scanner Solutions	PCPE-PGLSCN1	Standard Range Barcode Scanner
	PCPE-PGLSCN2	Mid Range Barcode Scanner
	PCPE-PCGCHR3	Barcode Scanner Charging Cradle
	PCPE-PGLIT* SL/ML/LL	Index Trigger Glove – 3 Pcs. Pack (SL: Left Hand Small Size, ML: Left Hand Medium Size, LL: Left Hand Large Size)
	PCPE-PGLIT* SR/MR/LR	Index Trigger Glove – 3 Pcs. Pack (SR: Right Hand Small Size, MR: Right Hand Medium Size, LR: Right Hand Large Size)
Professional Services	PCPE-PSBIOSG	Custom BIOS Service – Gold
	PCPE-PS20GIM	Image deployment per device (MOQ 30)
	PCPE-PSSIMIN	SIM Installation
	PCPE-PSATAG1	Asset Tagging
	PCPE-PSATAGB	Information Management Bundle
	PCPE-PSAUTOP	Autopilot Enrolment
	PCPE-PSLOGOB	Custom logo badge
	PCPE-PSSPACK	Solution Packaging
	PCPE-PSCDL01	Customised Deployment / Logistics
	PCPE-PSBTM01	Bespoke Training Material
Smart Services	CF-LESPSSM3/5	Smart Service self managed licence – 3 or 5 years
	CF-LESPBAEE1/3/5	Smart Battery Monitor software licence – 1, 3 or 5 years
	CF-LESPDAEE1/3/5	Smart Device Monitor software licence – 1, 3 or 5 years
Lifecycle support solutions	CF-LESPEW* 4/5	Extended Warranty
	CF-LESPAD* 3/4/5	Accidental Damage Warranty
	CF-LESPBASS* 3/4/5	Smart Battery Warranty

Panasonic and TOUGHBOOK are brand names and registered trademarks of Panasonic Corporation. Intel, the Intel logo, Intel Core, Intel vPro, Core Inside and vPro Inside are trademarks of Intel Corporation in the U.S. and other countries. Microsoft® and Windows® are registered trademarks of Microsoft® Corporation of the United States and/or other countries. All other brand names shown are the registered trademarks of the relevant companies. All rights reserved.

Mobile Solutions Business Division Europe, a division of Panasonic Marketing Europe GmbH Panasonic Marketing Europe GmbH is a company registered in Germany at Hagenauer Strasse 43, 65203 Wiesbaden, Germany. Registered in AG Wiesbaden HRB 13178