



LAND



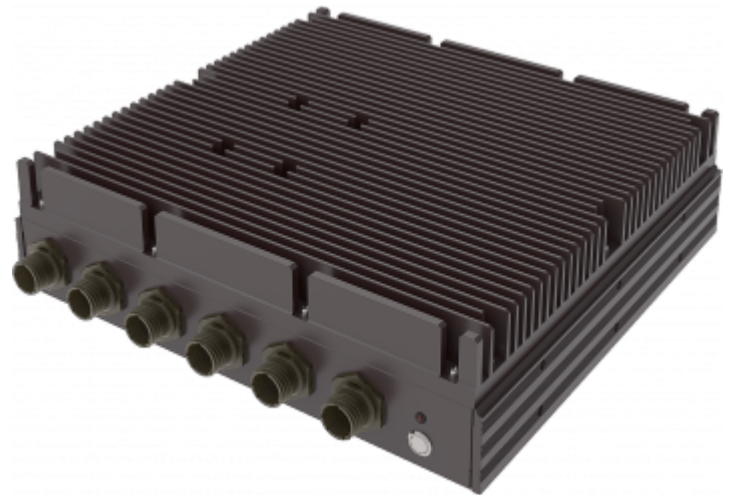
SEA



AIR

R112-T4

AI ACCELERATED GPU SERVER AMD RYZEN 5000 SERIES



AI INFERENCE RUGGED SERVER

- AMD® Ryzen™ 9 5950X CPU (16 Cores, 3.4 /4.9 GHz)
- NVIDIA TESLA T4 GPU Card (2560 CUDA, 16GB GDDR6)
- DDR4-128GB up to 3200 MHz
- 9V~36V DC-IN ; Option: 100V~240V AC-IN
- Storage(1): 1 x NVMe PCIe Gen3 x4
- Storage(2): 4 x SATA 3.0 (6Gb/s) SSD, RAID 1 supported
- IP65-rated for full system



Specification

SYSTEM

CPU	AMD® Ryzen™ 9 5950X CPU (16 Cores, 3.4 / 4.9GHz)
Chipset	AMD X570
Memory type	4 x DDR4 ECC UDIMM 3200MHz up to 128GB
GPU	NVIDIA TELS A T4 GPU (2560 CUDA, 16GB GDDR6)

STORAGE

Storage	Storage(1): 1 x NVMe PCIe Gen3 x4 Storage(2): 4 x 7.68TB SATAIII SSD (6.0Gbps), total capacity up to 30.72TB, support RAID 1
---------	---

REAR I/O

X1	1 x 10GbE (MIL-DTL-38999)
X2	1 x 10GbE (MIL-DTL-38999)
X3	1 x IPMI (MIL-DTL-38999)
X4	1 x VGA (MIL-DTL-38999)
X5	2 x USB (MIL-DTL-38999)
X6	9V~36V DC-IN (MIL-DTL-38999) Option: 100V~240V AC-IN

ENVIRONMENTAL AND MECHANICAL

Dimension	325 x 301 x 90.4 mm (W x D x H)
IP Rating	IP65
Operating Temp.	R11Z-T4: 0 ~ +50°C, R11Z-T4-ET: -20 ~ +60°C with External Cooling Fan Blade

Ordering Information

R11Z-T4

AI Accelerated GPU Server with AMD Ryzen 9 5950X Processor, NVIDIA TELS A T4, IP65, 2 x 10GbE, 1 x IPMI, 1 x VGA, 2 x USB, Operating Temperature 0 ~ +50°C

R11Z-T4-ET

AI Accelerated GPU Server with AMD Ryzen 9 5950X Processor, NVIDIA TELS A T4, IP65, 2 x 10GbE, 1 x IPMI, 1 x VGA, 2 x USB, Operating Temperature -20 ~ +60°C with External Cooling Fan Blade

Dimensions

