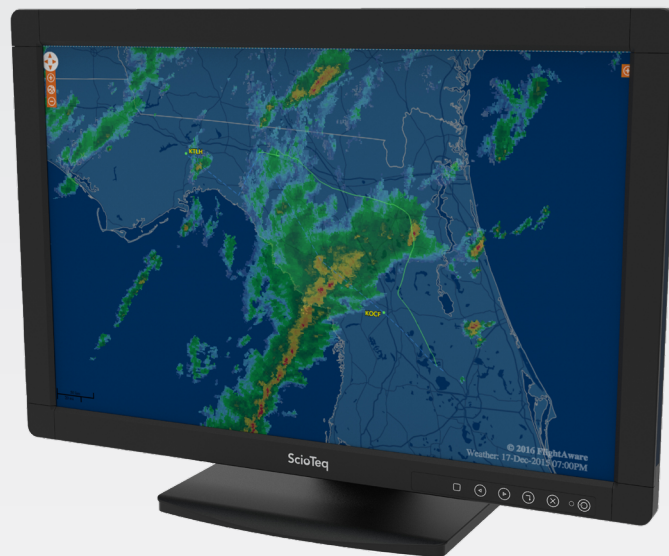


# TCD-361/2 TS

## 24" high-bright tower control display



### Highbright LED backlights

Scioteq's TCD-361/2 is a 24" wide screen tower display for air traffic control applications. Its premium quality LCD, WUXGA resolution and high-bright LED backlight bring optimum reading quality, reliability, and user comfort to tower control operators. The optional fast touchscreen detects up to 10 simultaneous touches, and adds a high-end protective and anti-reflective front glass.

### Perfect brightness at all times

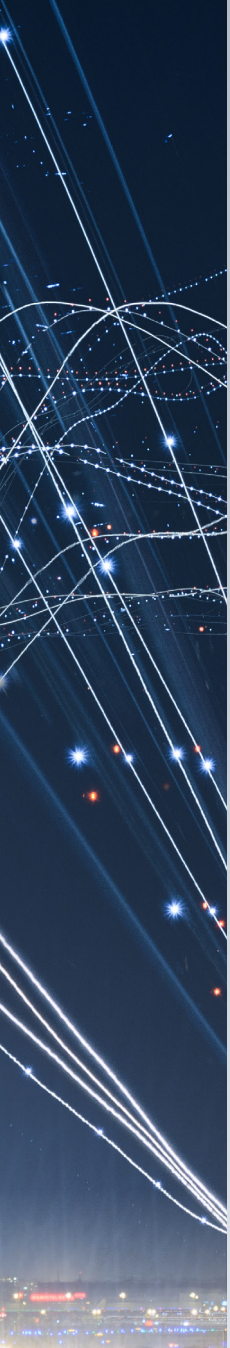
The tower control display's long-life backlight system combined with Scioteq's stabilization technology ensures stable brightness over time. The integrated ambient light sensor automatically adjusts brightness settings in function of the ambient light conditions. The TCD-361/2 is fan-less and noise-less and has a compact footprint to save space in the air traffic control tower.

### What you'll love about the TCD-361/2

- Full-color WUXGA resolution
- Long-life, power-efficient LED backlights
- Backlight output stabilization technology
- Ambient light compensation technology
- Fan- and noiseless
- Viewable under all circumstances\*



\* optional fast touchscreen, with high end filter glass



Product specifications	
Native resolution	1920 x 1200 pixels
Pixel pitch	0.270 x 0.270 mm
Active screen area	518.4 x 324.0 mm (19.83 x 19.83")
Active screen diagonal	611.4 mm (24.07")
Pixel arrangement	RGB vertical stripe
Backlight	Edge LED backlight system
LED lifetime	> 100,000 hours estimated
Luminance stabilization	BLOS = backlight optical stabilization (real-time feedback loop through continuous measurement)
Brightness BLOS	680 cd/m <sup>2</sup> calibrated and stabilized (2 year) 600 cd/m <sup>2</sup> calibrated and stabilized with touch screen (2 year) Tolerances (+-10%)
Backlight Output Stabilization (BLOS)	yes (real-time feedback loop through continuous measurement) Backlight aging compensation
Brightness max	850 cd/m <sup>2</sup> typical 750 cd/m <sup>2</sup> typical with touch screen
Dimming ratio	200:1
Contrast ratio	Typical 1500:1 - ratio of white/black image (Min 1000:1)
Ambient light control	Sensor integrated in OSD front control
Display colors	16.7 Mio (24 bit)
Color temperature	Adjustable between native, D65 and custom
Viewing angle	Superwide viewing angle performance - 178 ° typical, with CR ≥ 10
Display uniformity	White brightness uniformity typical 90% (min 75%)
Reflection	< 1% with and without touch screen
Response time	Tr (black to white transition): 10 ms, typical Tf (white to black transition): 8 ms, typical
Video inputs	Digital visual interface DVI - I Analog HDMI Display port
Digital multisync	Standard all VESA resolutions up to the maximum resolution (1920x1200) are displayed in letterbox format or scaled
Analog RGB	On DVI-I connector - termination: R,G,B : 75 Ohm ; HS, VS : 75 Ohm — sync-on-green supported
Noise	Not Applicable - passive cooling only
Power supply	Nominal voltage: 110 Vac & 230 Vac Operates between: 90-264 Vac Frequency range: 47-63 Hz
Power consumption	Pnom is typ 50 Watt, Pmax is 75 Watt, external power supply - connector type: IEC
Control possibilities	Front control module controls on-screen display Network - DHCP / Stat IP / SNMP / Web interface USB port B DDC communication EDID 1.3 DDC communication - customer settings
Touch screen	PCAP touch screen, multi touch - 10 touches, resolution 2048x2048, HID device
Sales support	2-year standard warranty - extended warranty services - maintenance training
Mounting	VESA 100x100 x M4 - M4 mounting available near corners, back side
EMI / EMC	EU/IEC/Canada/FCC: limit B
Safety	IEC60950-1, EN60950-1, UL60950-1, cUL60950-1, CCC
Operating temperature	0°C to 40°C (32°F to 104°F)
Humidity	90% at 40°C non-condensing atmosphere (operational and non-operational)

APPROVED FOR PUBLIC RELEASE; DISTRIBUTION IS UNLIMITED

The information and data given are typical for the equipment described. However any individual item is subject to change without any notice.

SCI\_TCD-361\_2\_TS\_SpecSheet\_200304

WWW.SCIOTEQ.COM

