

SHARP

Be Original.

LL-P202V
LL-S242A-W
TOUCHSCREEN LCD MONITOR



LL-S242A-W

LCD Monitors with the Power of Touch



LL-P202V

The LL-P202V is a 20-inch-class multi-touch LCD monitor with a digitizer function that lets you write directly on the display with the bundled digitizer pen. This monitor opens up a broad range of possible applications when used in concert with graphics software or with office software such as Microsoft® Word, Excel®, PowerPoint®, and Outlook®. The list of areas where the LL-P202V can add tangible value is almost limitless: in various business situations, in education, for proofreading, for CAD, in hospitality, in healthcare, and much more.

Stylish Design



Digitizer Pen

Variable-Angle Tilttable Stand

20-Inch-Class Full HD Touchscreen LCD

The LL-P202V employs a 20-inch-class capacitive touchscreen LCD with 10-point multi-touch functionality. This LCD provides extremely quick response for writing and touch gestures, while delivering full HD (1,920 × 1,080-pixel) resolution. It can also distinguish between pen input and hand input. When it detects the bundled digitizer pen, it prioritises pen input and cancels any input coming from hands or fingers.

Highly Sensitive Pen Input

Windows® 8.1 Compatible Digitizer Pen

The bundled digitizer pen is ergonomically designed for an easy grip and comfortable writing. You can write text or draw illustrations smoothly with an uninterrupted flow, and you can select small onscreen objects and move them around. The pen supports a wide variety of usage situations, ranging from business to graphics applications, using software such as Microsoft Reader.

Pressure-Sensitive Writing

The digitizer pen is pressure sensitive, enabling you to write smoothly and naturally as if on a piece of paper. Signatures look authentic, while illustrations get a warm, organic texture. And the Palm Cancellation function prevents hand input from interfering with pen input, so you can rest your hand comfortably on the screen while writing.

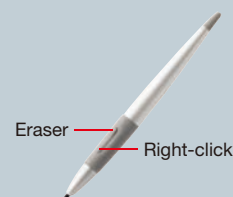


Handwritten input / e-signatures

Shortcuts to Frequently Used Functions

Functions that you need to use frequently, such as eraser and right-click*, can be assigned to a special function button on the pen. Functionality is activated by pressing the button while touching the screen with the pen tip. You can also take advantage of an onscreen shortcut launcher comprising eight shortcut icons* for frequently used functions that you can pre-assign. Simply click the function button as you hold the pen hovering over the screen to call up the shortcut launcher.

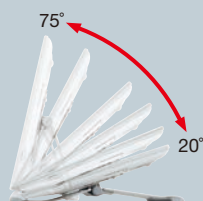
* Function settings can be changed using the bundled utility software.



Shortcut launcher

Stand Tilts at Variable Angles

The LL-P202V comes with a stand that can be tilted at an angle ranging from 20 to 75 degrees. The monitor can be set up in whatever position you find most comfortable: the 20-degree angle is ideal for onscreen handwriting, whereas the 75-degree angle provides optimal viewing.



Collaboration with Larger Displays

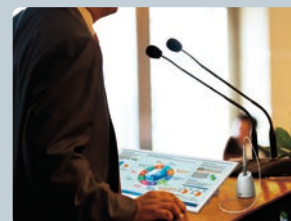
The LL-P202V connects with Sharp's interactive whiteboards and Sharp video walls for use in meetings, presentations, seminars, and lectures held in large venues. Content on the LL-P202V, including the presenter's handwritten annotations, can be mirrored in real-time on the interactive whiteboard or video wall for all participants to see.



Medical services and consultations



Creative work



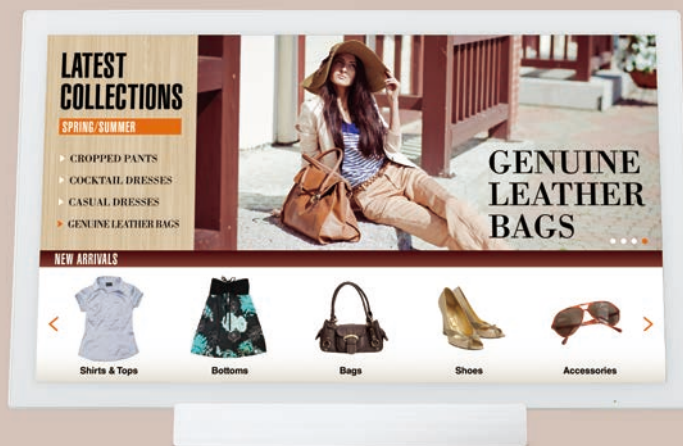
As a handy monitor for the presenter to show the same content on a video wall



The LL-S242A-W is a 24-inch-class touchscreen LCD monitor with 10-point multi-touch capability. Boasting high resolution and high responsiveness, it also supports handwriting via a dedicated fine-tipped touch pen. This is one monitor that adds fresh appeal to indoor digital signage applications. You get to enjoy interactive touchscreen communication and flexible installation options.



Portrait installation



Landscape installation

24-Inch-Class Full HD Touchscreen LCD

The LL-S242A-W employs a 24-inch capacitive touchscreen LCD that provides extremely quick response for writing and touch gestures, while also delivering full HD (1,920 × 1,080-pixel) resolution. A wide viewing angle of 178 degrees—both horizontally and vertically—means that viewers can see high-quality images with minimal alterations to colour and brightness.

Palm Cancellation Function

A palm cancellation function prioritises pen recognition, so you can write with the touch pen even if your palm is resting on the screen.

Choice of Installation Mode

Whether installed in a landscape or portrait orientation, the LL-S242A-W offers a convenient, high-impact way to convey information in a wide range of settings. It comes with a stand for both landscape and portrait installation, and it offers compatibility with commercially available VESA mounts.



2 mm-Tip Touch Pen

The bundled touch pen allows smooth and accurate onscreen writing of fine text and lines—it's just like writing on paper. The extra-narrow 2 mm tip enables you to easily underline text, add notations, and draw illustrations onto onscreen content. You can also add new information to your digital signage display to keep it up to date, or you can create eye-catching handwritten digital POP displays.



Sharp Pen Software

The bundled Sharp Pen Software opens up a world of natural handwriting functionality. Once documents have been imported as images and displayed on the touchscreen, you can write directly on them using the touch pen or a finger. This software also features an overlay mode that enables onscreen handwriting regardless of the application being used.

Sharp Digital Signage Software (option)

Sharp Digital Signage Software (SDSS) is versatile management software that provides total support for the creation, scheduling, distribution, and display of a wide range of onscreen content. SDSS lets you centrally monitor the system's operational status and control power on/off.

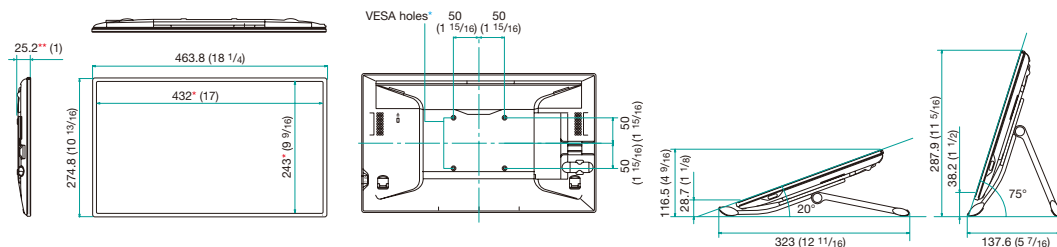
Specifications

Model Name		LL-P202V	LL-S242A-W
Installation		Landscape / Portrait ^{*1}	Landscape / Portrait
LCD Panel		20-inch-class (19 1/2-inch [49.5 cm] diagonal) TFT LCD	24-inch-class (23 5/8-inch [60.0 cm] diagonal) TFT LCD
	Max. Resolution	1,920 x 1,080 pixels	
	Max. Display Colours (approx.)	16.7 million colours	
	Pixel Pitch (H x V)	0.225 x 0.225 mm	0.272 x 0.272 mm
	Max. Brightness (average) ^{*2}	250 cd/m ²	
	Contrast Ratio (average)	3,000 : 1	1,000 : 1
	Viewing Angle (H/V)	178°/178° (CR ≥ 10)	
	Active Screen Area (W x H) (approx.)	432 x 243 mm (17" x 9 9/16")	521.3 x 293.2 mm (20 1/2" x 11 9/16")
	Response Time	5 ms (grey to grey, avg.)	14 ms (grey to grey, avg.)
	Backlight	LED, edge lit	
Touchscreen	Touch Technology	Capacitive touch	
	Multi Touch	10 points	
Touch Pen	Type	Digitizer pen	Touch pen
	Function Button	2	-
Supported OS		Windows® 8.1, Windows® 8, Windows® 7, Windows Vista® ^{*3}	
Computer Input	Plug & Play	VESA DDC2B	
Input Terminals		DisplayPort™ x 1, HDMI™/MHL™ x 1	
Input/Output Terminals		USB 2.0 (type A) x 1	
Built-in Speakers		1 W + 1 W	
Mounting		VESA (4 points), 100 x 100 mm pitch, M4 screw	
Power Supply		100V ~ 240V AC, 50/60 Hz, DC 19 V	
Power Consumption		41 W (29 W ^{*4})	48 W (36 W ^{*4})
Environmental Conditions	Operating Temperature	0°C to 35°C	
	Operating Humidity	20% to 80% RH (no condensation)	
Dimensions (W x D x H) (approx.) (display only)		463.8 x 25.2 x 274.8 mm (18 1/4" x 1" x 10 13/16")	566.4 x 28.7 x 338.3 mm (22 5/16" x 1 1/8" x 13 5/16")
Weight (approx.) (display only)		2.3 kg (5.07 lbs)	4.8 kg (10.58 lbs)
Main Accessories		Digitizer pen, pen stand, variable-angle stand, USB-Micro USB cable (for touchscreen operation), power cord, AC adaptor, utility CD-ROM (Sharp Pen Software, user's manual, etc.), warranty	Touch pen, fixed-angle stand (75 degrees), USB-Micro USB cable (for touchscreen operation), power cord, AC adaptor, utility CD-ROM (Sharp Pen Software, user's manual, etc.), warranty

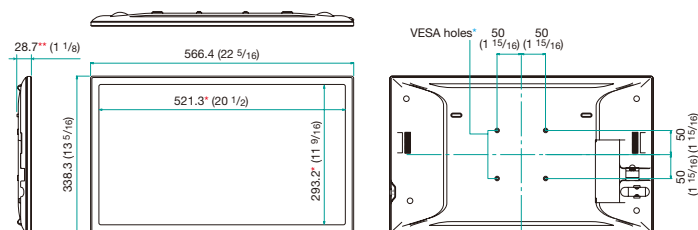
^{*1} Portrait installation not supported when used with bundled variable-angle stand. ^{*2} Brightness depends on input mode and other picture settings. Brightness level will decrease slightly over the lifetime of the product. Due to the physical limitations of the equipment, it is not possible to maintain a precisely constant level of brightness. ^{*3} Mouse operation only. ^{*4} When connecting DisplayPort and touch panel terminal.

Dimensions

■ LL-P202V



■ LL-S242A-W

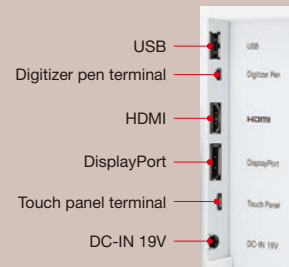


Units: mm (inch)

^{*} Screen dimensions ^{**} Not including protruberances

^{*} To use the VESA-standard mounting bracket, use M4 screws that are 4 to 6 mm plus the thickness of the bracket.

Input/Output Terminals



Main Accessories

■ LL-P202V



Digitizer Pen and Pen Stand

■ LL-S242A-W



Touch Pen

Stand

Microsoft, Excel, Outlook, PowerPoint, Windows, and Windows Vista are either registered trademarks or trademarks of Microsoft Corporation in the US and/or other countries. DisplayPort and the DisplayPort Compliance Logo are trademarks owned by the Video Electronics Standards Association in the US and other countries. The terms HDMI and HDMI High-Definition Multimedia Interface, and the HDMI Logo are trademarks or registered trademarks of HDMI Licensing Administrator, Inc. in the United States and other countries. MHL, the MHL logo, and Mobile High-Definition Link are trademarks or registered trademarks of MHL, LLC in the US and other countries. All other brand names and product names may be trademarks or registered trademarks of their respective owners.

DESIGN AND SPECIFICATIONS ARE SUBJECT TO CHANGE WITHOUT PRIOR NOTICE.



Distributed by:

SHARP