

# StudioPix

## Smaller companion to SHOWPIX joins Pixelation Luminaire Product Line

Introducing **StudioPix™**, a hybrid wide-angle moving yoke LED wash light with programmable graphic imaging. This second product in HES' new line of Pixelation Luminaires™ is smaller than its predecessor **SHOWPIX™** and features a circular array of 61 homogenous 3-watt LEDs on a 13.5-inch diameter head with an output of 11,500 RGB lumens. The pixels offer unlimited possibilities by projecting not just color, but also displaying images and effects that transform the fixture head into a display device.

### OPERATION

Pan: 540°

Tilt: 210°

Control: DMX512/RDM

Compliances: CE, CSA, ETL

Content Management: Content and Software uploading to the fixture using Echo software via a USB upload module or a Wholehog single USB DMX widget.

DMX Connectors: 5-pin male and female XLR connectors)

### ELECTRICAL/LIGHT SOURCE

Input Ratings: 100-230 V AC; 50-60 Hz; 8-3.5A (800W)

LED Array: 61 3-watt RGB LEDs with homogenizing system

Output: 11,500 RGB lumens\*

Beam angle: 45°

Field angle: 80°

Color mixing: RGB

\*RGB lumens are calculated by comparing the combined energy levels of SHOWPIX WRGBCMY to a theatrical metal halide color changing fixture and creating a factor.

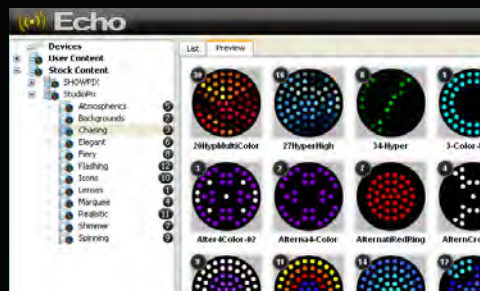
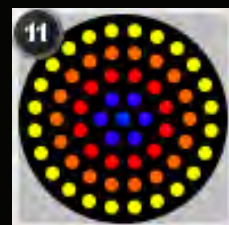
### MECHANICAL SPECIFICATIONS

mm: 540 x 300 x 601

inches: 21.3 x 11.8 x 23.7

weight: 20.9 kg (46 lbs)

Specifications subject to change without notice. Certain specifications may be the result of future software releases.



LED washlight

High intensity graphic image displaying fixture

61 homogenous 3-watt LEDs

Onboard graphics engine

411 PixelArt stock content animation and patterns

Up to 255 user files can be added

DMX Scratch™

Integrated Echo™ software for visualization and content management

# StudioPix™

PIXELATION LUMINAIRE

A Richard Belliveau Concept

HIGH END SYSTEMS



For more information:  
[www.highend.com](http://www.highend.com)