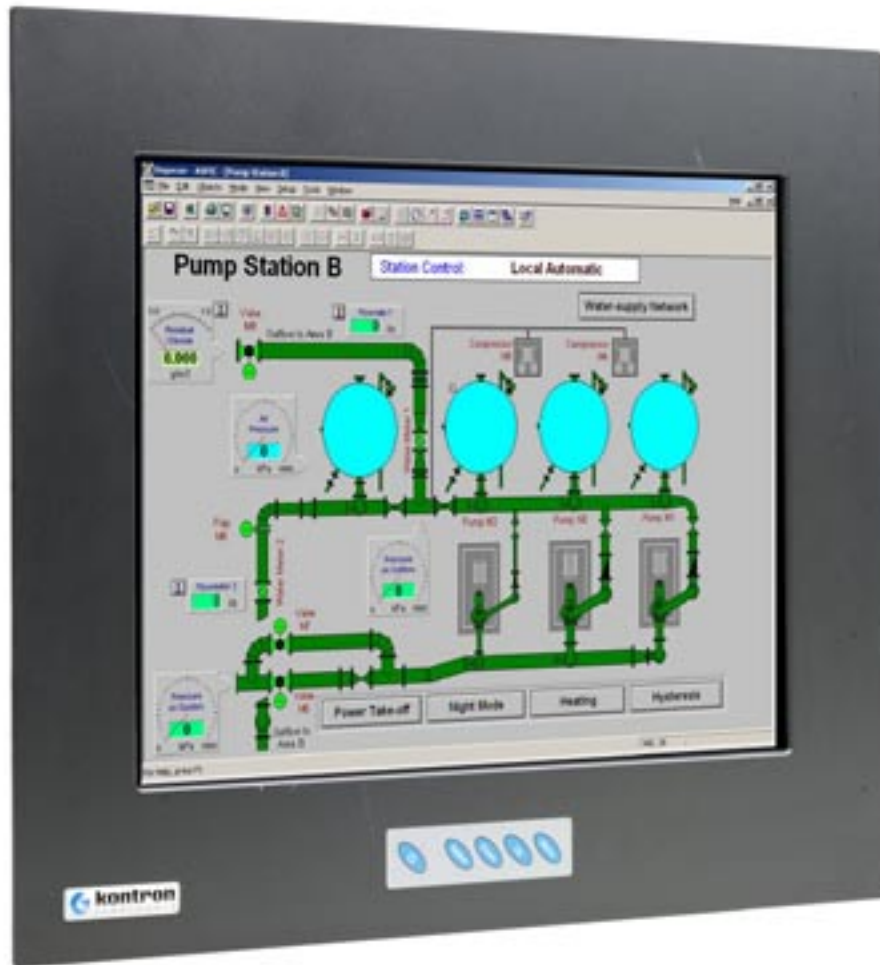


➤ KFM 19_e

Industrial LCD Monitor



- **Enjoy Brilliance**
300cd/m², contrast ratio 400:1 and wide viewing angle
- **Relish Quality**
High Industrial Grade Monitors with long life time
- **Rejoice KFM**
Easy handling, easy installation, easy operation

➤ Product Overview

With a variety of interfaces and multiple options, KFM 19_e industrial LCD Monitor offers flexible management for a diverse range of industrial applications. KFM 19_e from Kontron offer more than a display. This KFM 19_e industrial LCD Monitors is fully certified, and in conjunction with Kontrons 19" racksystems you will have the ideal and fully adapted solution to get in touch with your applications.

KFM 19_e is specially designed for industrial applications. The front accessible On-Screen Display functions allows users to adjust images with ease.

The optional touch screen permits access to your system. With this new KFM 19_e you enjoy vivid and precise images.

And it offers a broad variety of input types. KFM19_e has a standard: VGA, DVI, S-Video and Composite Video inputs.

➤ Technical Information

| Dimensions | |
|--|--|
| Panelmount: | 327 mm x 424 mm x 3 mm, Rackmount: 9U x 19" x 3 mm |
| Body: | 372 mm x 424 mm x 73 mm |
| Constructions | |
| Anti corrosion and long term stable heavy duty steel, EN 10215 DX 51D+AC 150-A-C | |
| Net Weight | |
| ~8,5 kg | |
| Paint Color | |
| RAL 7021 black | |
| Control panel indicators | |
| Power LED (optional) | |
| Operating elements | |
| Status LED (Power On, data active) Power on Switch | |
| TFT LCD Display | |
| Diagonal: | 19" |
| Resolution: | 1280x1024 |
| Pixel Pitch: | 0,294 mm |
| Displaycolors: | 16 Mio. |
| Backlight: | 2 CCFL |
| Brightness: | 300cd/m2 |
| Viewing angle: | 85, 85, 85, 85 |
| Contrast ratio: | 400:1 |
| Safety | |
| EN 60950, IEC 60950 | |

| Interfaces (at the left side rear) | |
|--|--|
| VGA SUB-D, DVI, S-Video, Composite Video | |
| Power Supplies | |
| integrated 115/230 V AC; optional integrated 24 V DC | |
| Options (Fully certified with system) | |
| Touchscreen resistive, 24 V DC power supply | |
| Protection class | |
| IP65 front | |
| Temperature/Humidity (*) | |
| operating: | 0° to 50°C (32° to 122°F) |
| | 5 to 95 % rel humidity (non condensing) |
| Vibration | |
| operating: | 10 to 58 Hz: ±0,075 mm, 58 to 500 Hz: 0,5 G |
| Shock | |
| operating: | 5 G 11 ms half sine |
| Altitude | |
| operating: | 10,000 ft |
| MTBF | |
| > 30,000 h | |
| EMC | |
| Europe: | EN 50081-1/-2 (emission), EN 50082-1/-2 (immunity), EN 55022/A: 1994 (CISPR22) |
| Approvals | |
| CE mark | |

(*) see manual for details

➤ Corporate Offices

Europe, Middle East & Africa
Oskar-von-Miller-Straße 1
85386 Eching/Munich - Germany

Tel.: +49 (0)8165/ 77 0
Fax: +49 (0)8165/ 77 279

sales@kontron.com

US/ Canada
6260 Sequence Drive
San Diego, CA 92121-4371

Tel.: (858) 677-0877
Fax: (858) 677-0898

sales@us.kontron.com

Asia Pacific
5F-1, 341, Sec 4, Chung Hsiao E.
Rd, Taipei, Taiwan

Tel: +886 2 2781 5791
Fax: +886 2 2741 7379

sales@kontron.com.tw