

Reducing your total cost of ownership

The price of a projection system is more than just its purchase: servicing, maintenance, peripherals and learning curves should also be taken into account, and often add up to a much higher cost. Barco's Galaxy NH-12 greatly reduces the total cost of ownership on many levels:

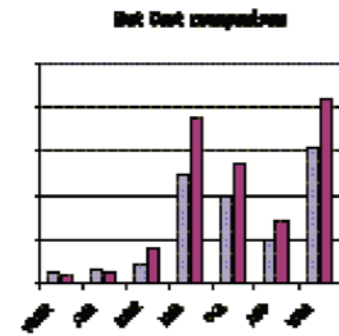
• **You save time**, because you don't need to learn how to work with a new interface and connect various sources over and over again. You simply use Windows and its Barco Start Menu options.



• **Reduce maintenance costs.** Your projection system is practically maintenance-free due to its sealed optical engine, and its centralized control and maintenance functionalities eliminate many manual check-up routines.

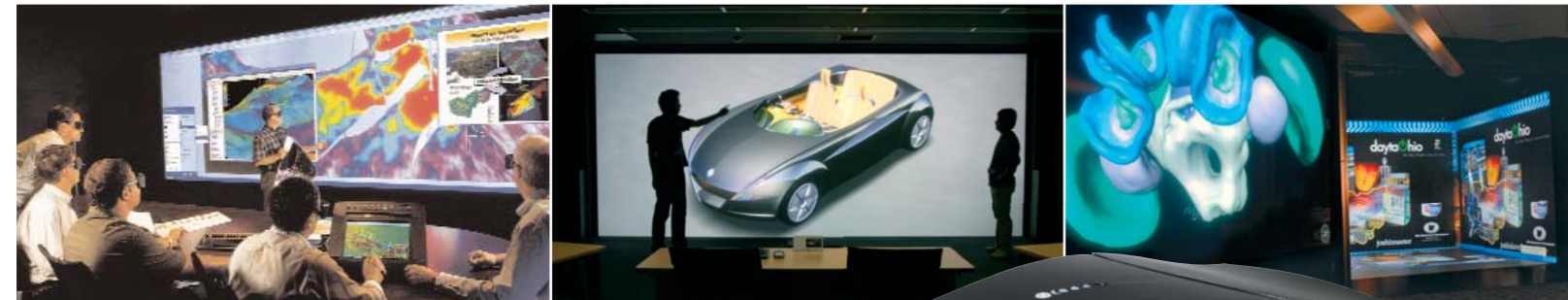
• **You save money**, because you don't need to buy remote controls or matrix switchers. Instead, you use keyboard and mouse, and display sources simultaneously on one screen, in fully reconfigurable windows.

• **Improved reliability.** Thanks to its liquid cooling and its top-of-the-line xenon lamp, the NH-12 boasts a significantly longer system lifetime compared to other three-chip DLP systems.



■ Network's Peripherals
■ AP's Control

VSMR: Very small meeting room
SMR: Small meeting room
MMR: Medium size meeting room
LMR: Large meeting room
VCR: Videoconference room
AUD: Auditorium
WRR: War room



Applications

- Geophysical data analysis
- Avionic and automotive design and review
- Scientific research and data management

Galaxy NH-12 technical specifications

Display capabilities	Light output	12,000 center lumens (+/- 10%)
	Contrast	up to 2,000:1
	Resolution	Full HD (1,920 x 1,080)
	Chip technology	Sealed and liquid cooled 3-chip DLP™
Lamps	Lamp	2 kW Xenon
	Lamp warranty	750 hrs warranted, max. 800 hrs
Dimensions	Weight	70 kg (154.2 lbs) net - 85 kg (187.4 lbs) shipping weight
	Height - width - length	345 / 590 / 913 mm
		13.58" / 23.22" / 35.94"
Lenses	Available zoom lenses / HD real throw	
	TLD HB (1.6-2.0:1)	(rt 1.4-1.7:1) R9842060
	TLD HB (2.0-2.8:1)	(rt 1.7-2.4:1) R9842080
	TLD HB (2.8-5.0:1)	(rt 2.4-4.3:1) R9842100
	TLD HB (5.0-8.0:1)	(rt 4.2-7.0:1) R9842120
	Available fixed focal lenses	
TLD HB (0.8:1)	R9842040	
TLD+ (1.2:1)	R9840775	
Lens shift range	Horizontal shift up to +/- 65%	
	Vertical shift up to +/- 100%	
Features	Special features	
	Standard active and polarized stereo, optional active Infitec	
	Source and PIP operation through Windows OS	
	Standard full geometry correction	
	Sealed, liquid-cooled engine	
	Desktop output including external source windows on DVI-D	

Inputs and outputs	Standard inputs	
	1x 5-BNC (RGBHV, RGBS or RGBsB)	
	1x Composite video (BNC)	
	1x S-Video (4-pin mini DIN)	
Optional inputs (1 free layer)	1x DVI	
	1x VGA (D15)	
	3 stereo sync inputs (mini-DIN)	
	SDI/HD-SDI input	
Communication ports	RS232 (on D9)	
	10/100 Mb/s Ethernet (on RJ45)	
Compatibility	Video	
	PAL, SECAM, NTSC video signals in Composite, S-video, component or RGB format	
	All current HDTV standards (720i, 720p, 1080i, 1080p) in Component or RGB format	
	Data	
Safety standards	All computer graphics formats up to QXGA @ 120 Hz	
	Analog sources with a pixel clock of up to 270 MHz	
	DVI sources with a pixel clock of up to 165 MHz	
AC power	Safety standards	
	ETL60950 and EN60950	
	CE compliant	
Power	CCC compliant	
	AC power	
	200 - 240 VAC/50-60 Hz	
Order info	Max. power consumption / dissipation	
	2,800 Watt / 9,560 BTU	
	Galaxy NH-12	R9040400
New 2kW lamp	R9843080	
Refurbished lamp	R9843090	
QXGA RGBHV input	R9843020	
DVI/D15 input	R9843030	
SDI/HD-SDI	R9843040	

Ref.no. R5990079 December 2007



DLP™ technology by Texas Instruments offers crystal clear images with superior quality. DLP is a trademark of Texas Instruments.

The information and data given are typical for the equipment described. However any individual item is subject to change without any notice.

APAC
7F, FenYang Road 138
200 031 Shanghai - China
Tel. +86 21 5465 5501
Fax +86 21 5465 5502

Barco
Presentation & Simulation Division
contact.bps@barco.com

USA
600 Bellbrook Avenue
Xenia, OH 45385-4053
Tel. +1 (937) 372-7579
Fax +1 (937) 372-8645

EMEA & ROW
Noordlaan 5
8520 Kuurne - Belgium
Tel. +32 56 36 82 11
Fax +32 56 36 85 26



www.barco.com

Galaxy NH-12

12,000 lumens three-chip DLP, 1080p HD stereoscopic projector



Barco's Galaxy NH-12 is the world's first active stereoscopic projector with Windows desktop integration that can project 2D mono and 3D stereo images simultaneously in full native 1080p HD. The 12,000 lumens, three-chip DLP Galaxy provides brighter, more reliable images and a wider field of view thanks to its 1080p HD resolution. It is a network-centric projector, which greatly increases its ease-of-use in image-critical and virtual reality applications with large amounts of data.



Excellent stereo image quality

The Galaxy NH-12's 1080p HD resolution yields a pixel count that is 60% more than that of a classic SXGA+ resolution, which means far more detail can be displayed at once, and image sizes will be closer to the human eye's field of view.

Its three-chip DLP technology is noted for its high reliability, natural color reproduction, extended gray levels and high **brightness**. The Galaxy NH-12 has improved upon this with a greater contrast ratio and deeper black levels. In addition, three-chip DLP technology is also the preferred platform for stereoscopic projection.

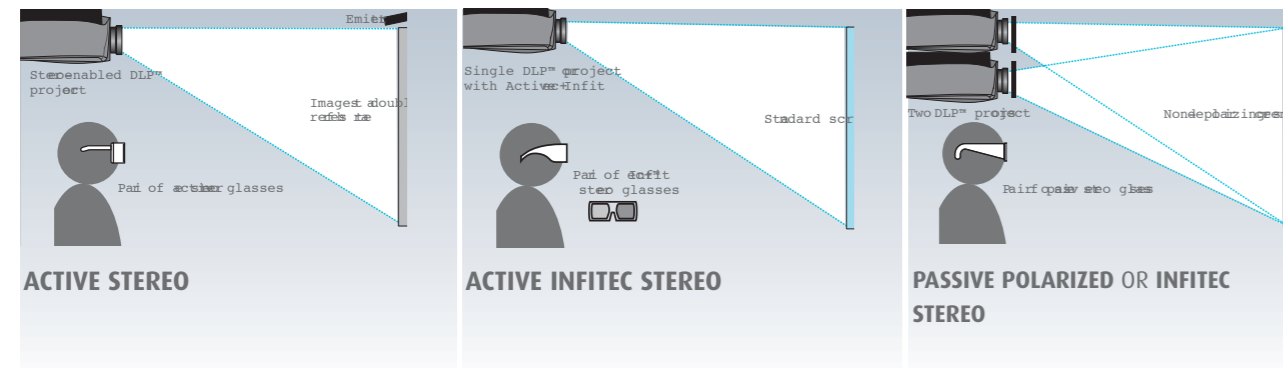
The exact 3D rendering that Barco's Galaxy NH-12 offers is vital to applications such as **automotive** design review, analysis of large **geophysical** data sets, pharmaceutical and scientific **research** and many others. The Galaxy NH-12 supports any current type of stereoscopic technology, depending on the customer's wishes:



- The NH-12 is a standard active stereoscopic projector. Active stereo uses only one projector per stereo channel, and retains exceedingly high levels of color quality. By requiring only one projector per channel, a visualization system can attain much higher levels of cost-efficiency.

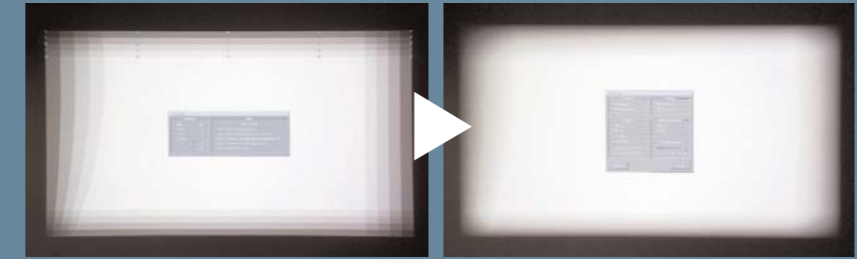
- The NH-12 has integrated optional **active Infitec** filters. This Barco-patented stereo technology has uncompromised image quality, regardless of the type of screen you use. In addition, active Infitec makes use of considerably more affordable passive glasses.

- The NH-12 also supports passive **polarized** 3D stereo, if your visualization center is to be used by large groups. Passive stereo setups, where two projectors generate one stereo image, also retain high levels of brightness, which is ideal for larger rooms.

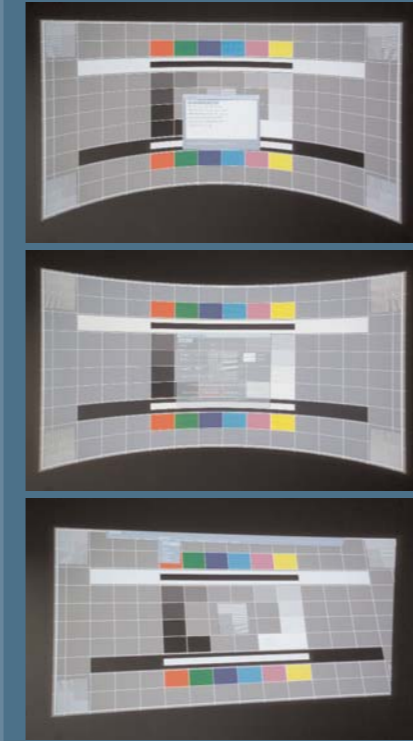


Perfect projection on any screen type

The Galaxy NH-12 features Barco proprietary technology that makes it an excellent choice for multi-channel setups and large screen applications, such as flat or curved display walls, or immersive stereoscopic environments:



Set-up through real-time on-screen mask. Resulting soft-edge mask.

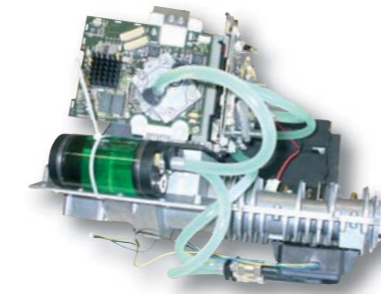


- Edge blending** technology creates one continuous image across the entire screen, without blurry overlap zones, thanks to new **alpha and beta** planes. Barco's edge blending can be electronic, optical or a combination of the two, to have the best of both worlds.

- DynaColor** and **linked CLO** (constant light output) match color or brightness differences across channels to create one constant color and light output for the entire image.

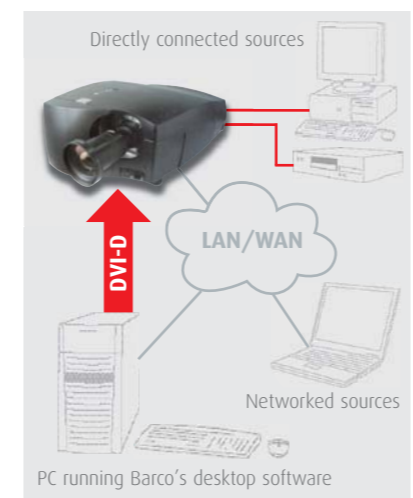
- Bi-cubical warping** (geometry correction) ensures that an image is projected correctly, with an extremely high level of accuracy (up to 33 by 33 control points), even across curved, non-flat surfaces, to guarantee a natural view free of distortions.

Revolutionary design



The aesthetically designed Galaxy NH-12 boasts a completely new chassis and optical engine aimed at having some of the **lowest noise levels** in its class, averaging well under 49dB. The **liquid-cooled** optical engine's reliability is further increased by being **fully sealed**, which means no dust can enter and cause degradation in contrast and black levels. Furthermore, no filter replacement is needed. Your image quality also remains stable over time, thanks to the NH-12's rock solid lens holder. This grants the Galaxy NH-12 a system lifetime that is substantially longer than that of similar three-chip DLP systems.

More flexibility



Barco's Galaxy NH-12 can be flexibly connected to all kinds of sources. With its wide input range for both 2D mono and 3D stereo, it is the ultimate in simultaneous data and video, and **hybrid mono and stereo projection**.

The Galaxy NH-12's wide horizontal and vertical lens shift options further render it a perfect choice for both front and rear projection. Its keystone and **linearity corrections** are vastly superior to those of regular three-chip DLP systems, and help resulting in an **exceptional image quality**.

Real-time interaction and collaboration in 1080p HD

Collaborating in real time on multiple sets of data and video simultaneously is the dream of any multidisciplinary team. By being able to cross-analyze relevant data on one big screen, the Galaxy NH-12 suddenly makes interactive decision-making an efficient process that greatly enhances your workflow.

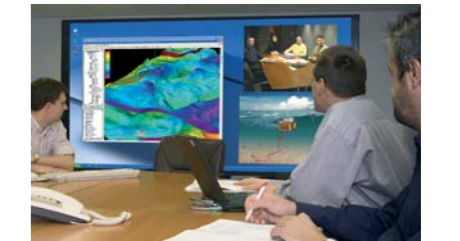
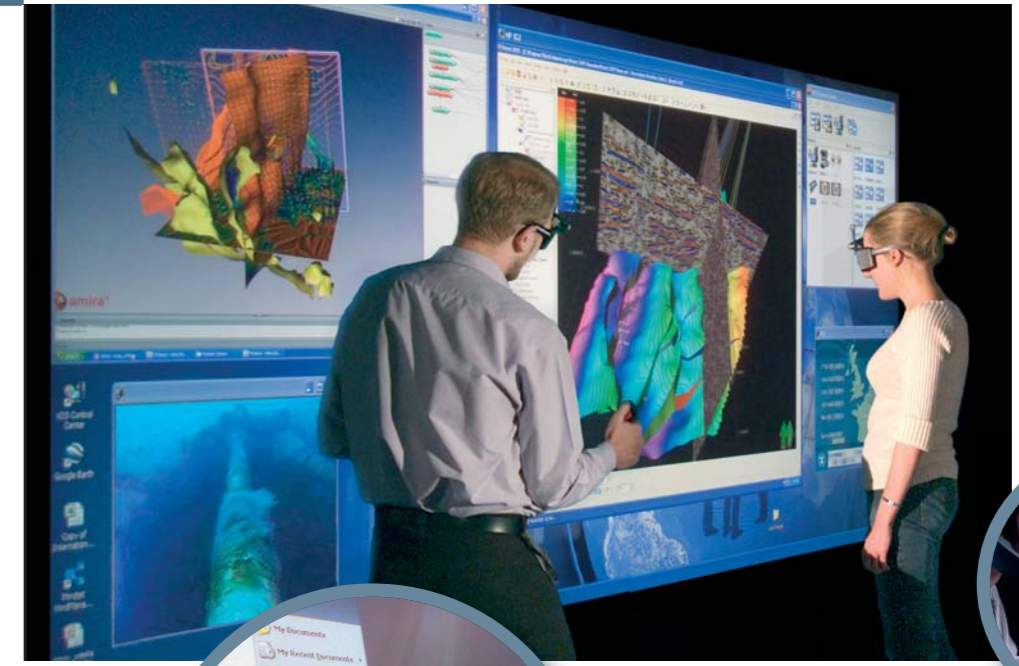
Flexible source multi-windowing

Barco's Galaxy NH-12 allows easy connection to a vast array of sources, including computers, 3D workstations, DVD players and networked locations. The NH-12 processes these sources, whether mono or stereo, simultaneously and renders them in multiple win-

dows that can be freely resized, moved or made to overlap on a widescreen Windows desktop at will. Cross-analyzing and collaborating with all relevant information on one screen accelerates the decision-making process in ways that were unthinkable in the past.

Razor-sharp, natural video-conferencing

Thanks to the Galaxy NH-12's superior 1080p HD resolution, videoconferencing over IP in lifelike, natural detail becomes possible. This renders your collaboration session interactive to the greatest level. With your videoconfer-



encing running in one window and remote participants sharing their desktop over the network, each team can analyze the same information remotely and simultaneously.



Maximized ease of use through Barco-patented software

The Galaxy NH-12 is controlled with mouse and keyboard. With a simple click of the mouse, you can select sources from the Windows Start Menu option "My Sources". Similarly, you can save and recall various screen layouts through "My Layouts". This allows you to start up an important window configuration for a meeting immediately, without having to go through the time-consuming routines of selecting and displaying sources manually each time.

Centralized control and diagnostics

The Galaxy NH-12 presents a great asset for your tech support staff, as it allows easy, centralized control and diagnostics over the network, including remote startup and shutdown. Special Barco software enables staff to check the projector's runtime, its lamp lifetime and the status of connected sources. It also sends automated e-mail alerts to your AV/IT-personnel in case of lamp problems.