

New

MOBILE PROJECTOR

WXGA

WD720U

XGA

XD700U

Brilliant Color™

Color Enhancer

Wall Screen

10W Speaker

User Logo Projection

Manual Lens Shift

Efficient Mode

USB/LAN Display

Remote Disktop

Computer-free Presentation

Stand-by Audio

Audio Mix

Visual PA

Password Lock

Direct Power Off

Long-life Lamp

Low Stand-by Power

Top Loading Lamp

LAN (RJ-45)

HDMI

Closed Caption

Low Fan Noise

Picture Performance

Presentation

User-friendly

DLP

PICTURE BY TEXAS INSTRUMENTS

DLP

3D READY

Input and Output Terminals

1

2

3

4

5

6

7

8

9

10

1 Audio output

2 Audio input

3 S-Video/Video

4 Monitor output

5 Serial RS-232C

6 PC/Component video input

7 HDMI

8 USB (type-B)

9 USB (type-A)

10 LAN (RJ-45)

Specifications

Model	WD720U	XD700U
Display technology	0.65" 1-chip DMD	0.7" 1-chip DMD
Resolution	1280 × 800 (total 1,024,000 pixels)	1024 × 768 (total 786,432 pixels)
Brightness*	4300lm	5000lm
Contrast ratio	3000 : 1	3000 : 1
Picture size	40" - 300"	40" - 300"
Throw ratio	1.5 ~ 2.2	1.4 ~ 2.1
Source lamp	Standard Mode: 280W (Shut-off Time 3000hrs) , Low Mode: 230W (Shut-off Time 5000hrs)	
PC compatibility	640 × 480 - 1600 × 1200 True : 1280 × 800, sync on green available	640 × 480 - 1600 × 1200 True : 1024 × 768, sync on green available
Video compatibility	NTSC / NTSC 4.43 / PAL (including PAL-M, N) / SECAM / PAL-60 Component video; 480i/p (525i/p), 576i/p (625i/p), 720p (750p), 1080i/p (1125i/p 50/60Hz)	
Input terminals	RGB; mini D-sub 15pin × 2 Audio; stereo mini jack (ø3.5mm) × 2 (one for PC1, the other for PC2) Video; RCA × 1 + S-VIDEO × 1 Digital; HDMI × 1 Video audio; RCA jack (L/R) × 1	
Output terminals	RGB; mini D-sub 15pin × 1 Audio; stereo mini jack (ø3.5mm) × 1	
Communication terminals	SERIAL; mini D-sub 9pin × 1 (RS232C) LAN (RJ-45); × 1 (projector control, LAN display) USB type-A; wireless display, Computer-free presentation (PC less presentation) USB type-B; USB display	
Audio speaker	10W mono	
Dimensions (W × H × D)	345 × 134 × 270 mm / 13.6 × 5.3 × 10.6 inch	
Weight	4.1kg / 9.0lbs	
Power requirements	AC 100-240V, 50/60Hz	
Optional lamp	VLT-XD700LP	

\* Compliance with ISO21118-2005 •Varies depended on condition. •All brand names and product names are trademarks, registered trademarks or trade names of their respective holders. •Lamp life specification is an estimate based on verification under proper conditions and is not the duration of the warranty. Lamp will shut-off automatically when usage reaches the specified estimated maximum lamp hours. Service life may vary widely depending on usage and operating environment and conditions, as well as users' adherence to the maintenance and cleaning procedures provided in the user manual. •HDMI, the HDMI Logo, and High-Definition Multimedia Interface are trademarks or registered trademarks of HDMI Licensing LLC in the United States and other countries."

Screen Size and Projection Distance

Side view

Screen size chart (WD720U)

Screen (16 : 10)						Projection Distance (L)		Height projected image (Hd)		Lens shift height			
Diagonal size		Width (W)		Height (H)		Shortest (Wide)		Longest (Tele)		H1		H2	
inch	cm	inch	cm	inch	cm	inch	m	inch	m	inch	cm	inch	cm
40	102	34	86	21	54	49	1.2	73	1.9	6.2	16	3	7
60	152	51	129	32	81	74	1.9	111	2.8	9	23	4	11
80	203	68	172	42	108	100	2.5	149	3.8	12	31	6	15
100	254	85	215	53	135	125	3.2	187	4.8	15	39	7	18
120	305	102	258	64	162	150	3.8	225	5.7	18	47	9	22
150	381	127	323	79	202	188	4.8	282	7.2	23	59	11	27
200	508	170	431	106	269	251	6.4	377	9.6	31	78	14	36
250	635	212	538	132	337	314	8.0	—	—	38	98	18	46
300	762	254	646	159	404	377	9.6	—	—	46	117	22	55

Screen size chart (XD700U)

Screen (4 : 3)						Projection Distance (L)		Height projected image (Hd)		Lens shift height			
Diagonal size		Width (W)		Height (H)		Shortest (Wide)		Longest (Tele)		H1		H2	
inch	cm	inch	cm	inch	cm	inch	m	inch	m	inch	cm	inch	cm
40	102	32	81	24	61	45	1.1	67	1.7	3.6	9	3	7
60	152	48	122	36	91	68	1.7	102	2.6	5	14	4	10
80	203	64	163	48	122	91	2.3	137	3.5	7	18	5	14
100	254	80	203	60	152	115	2.9	171	4.3	9	23	7	17
120	305	96	244	72	183	138	3.5	206	5.2	11	27	8	20
150	381	120	305	90	229	173	4.4	258	6.5	14	34	10	25
200	508	160	406	120	305	231	5.9	344	8.7	18	46	13	34
250	635	200	508	150	381	289	7.3	—	—	23	57	17	42
300	762	240	610	180	457	348	8.8	—	—	27	69	20	51

MITSUBISHI ELECTRIC CORPORATION

HEAD OFFICE : TOKYO BLDG., 2-7-3, MARUNOUCHI, CHIYODA-KU, TOKYO 100-8310, JAPAN

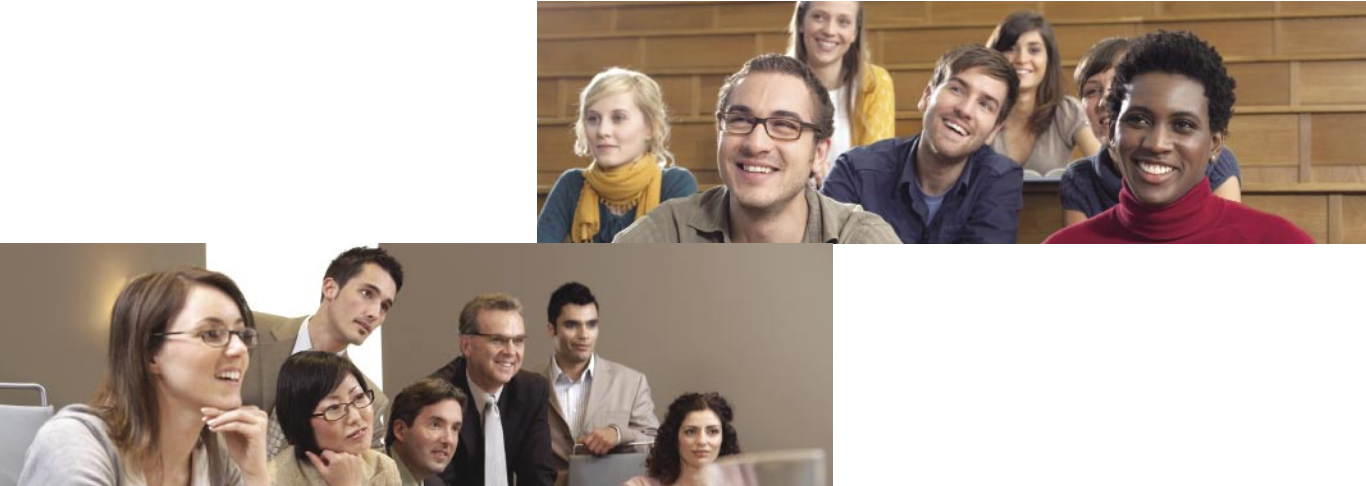
MITSUBISHI ELECTRIC EUROPE (BENELUX Office)

Nijverheidsweg 23A, 3641 RP Mijdrecht - The Netherlands  
Tel: +31 (0)297-282461 Fax: +31 (0)297-283936 - www.MitsubishiElectric.nl



MULTIMEDIA DATA/VIDEO PROJECTORS

Changes for the Better



Expanding the Limits of Mobility...  
World-class premium mobile projectors with superior contrast and brightness

New

WIDE WAGA

WD720U

XD700U



for a greener tomorrow



# Full Flexibility for a Diverse Range of Uses

from conference rooms to lecture halls, floor-standing to ceiling-suspended

Always working to provide superior products, Mitsubishi Electric is delighted to introduce the 700 series of premium-grade mobile projectors. Extremely reliable and easy to use, this projector line-up produces images at the amazingly high contrast of 3000:1 and with 5000lm brightness. Features such as a long-life lamp (5000hr) to ensure reliability, an Efficient mode for eco-conscious operation, a simple lens shift function for quick setup/installation, and USB/LAN display, remote desktop control and other unique network-compatible functions ensure user-friendly operation wherever used.



## High Image Quality

### Vivid color 5000lm\* Brightness and 3000:1 High Contrast

Features including impressive 5000lm brightness and a high contrast of 3000:1 allow the XD700U to reproduce clear, sharp images regardless of venue size, be it a large meeting room or lecture hall. Mitsubishi Electric's original color wheel and BrilliantColor™ are incorporated as well, ensuring life-like color reproduction. Whether coming from a computer, video-cassette player or other source, the reproduction of vivid images full of color is guaranteed.

\* WD720U: 4300lm



Projection of clear, sharp images even in brightly lit rooms



3000lm



5000lm

## High Reliability & Eco-conscious

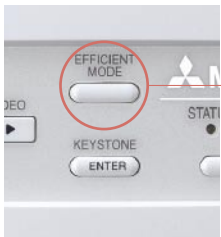
### Energy-efficient Mode Selection

Models are equipped with selection functions for the lamp, power source and standby mode, allowing each to be set according to the usage environment.

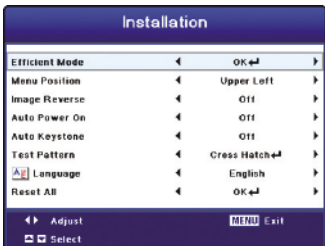
Lamp Mode: Standard / Low

Standby Mode: Low / LAN / Speaker Out / Monitor Out

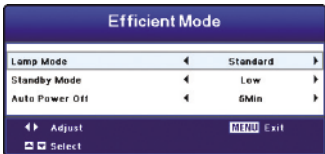
Auto Power Off: OFF / 5Min / 10Min / 15Min / 30Min / 60Min



Modes can be set and changes made to them by direct input using the operation panel on the projector or via the remote controller.



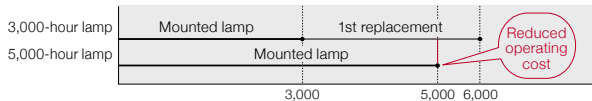
Energy-efficient modes set using installation setup screen



Each mode can be set individually

### Estimated 5000-hour lamp life (in Low mode)

A longer service life for the projection lamp has been achieved by incorporating an optimal design for lamp temperature control. Benefits include substantial reductions in projector operating cost and the labor required for changing the lamp.



\*Lamp life specification is an estimate based on verification under proper conditions and is not the duration of the warranty. Lamp will shut-off automatically when usage reaches the specified estimated maximum lamp hours. Service life may vary widely depending on usage and operating environment and conditions, as well as users' adherence to the maintenance and cleaning procedures provided in the user's manual.

### Auto Power Off

If no image signal is output for a predetermined period of time\*, power is automatically turned off, realizing energy savings by reducing needless power consumption.

\*Time preset by user

### Stand-by Wattage under 0.5W\*

Stand-by (low) mode power consumption is less than 0.5W, offering increased energy savings and further contributing to environmental preservation.

\*When in stand-by (low) mode. At this time, use of the LAN function is not possible.

### Unpainted Cabinet (Recyclable)

As an eco-conscious measure to promote recycling, an unpainted projector cabinet is adopted.

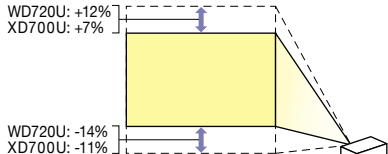
## Installation flexibility & User friendly Presentation

### Lens Shift Function (Vertical only)

Simply open the top cover on the projector and use the shift-adjustment toggle to manually shift the lens vertically. This eliminates the need to move the projector to adjust the position of images being projected, enabling the flexibility to install it in virtually any setting environment.



Shift-adjustment toggle



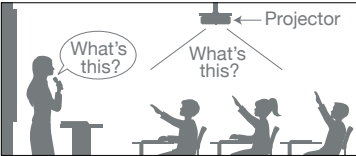
Availability area for lens shift from default position  
\*Please refer to "Screen Size and Projection Distance" on the back cover.

### Quiet 28dB Operation

Projection fan noise can be distracting during a presentation or videoconference. 700 series projectors operate at a significantly low noise level of only 28dB (i.e., in "low lamp" mode). As a result, presentations and conferences can be held without distracting projector noise in the background.

### Excellent Sound Projection (10W Speaker+Audio Mix)

Using Audio Mix and the built-in 10W speaker, the voice of the presenter and audio from an external audio source can be delivered simultaneously.



Loud 10W built-in speaker + Audio Mix

### Various Presentation Function

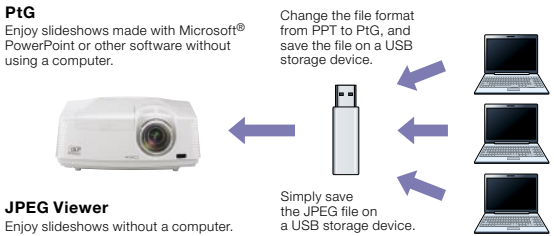
#### Computer-free Presentation (PC less presentation) [PtG file/JPEG Viewer]

Using "PtG Converter", PowerPoint files can be converted into a special format and saved on a USB storage device. When the USB device is connected to the projector, users can replay slideshows or animation effects using only the projector.

Note: The types of slideshows and animation effects that can be replayed are limited.

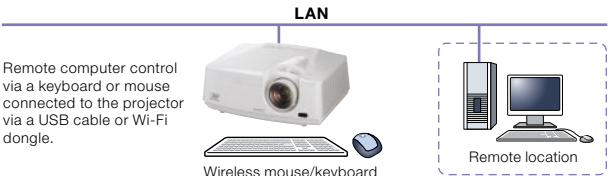
JPEG files saved on a USB storage device can be projected in slideshow style.

Note: Only compatible with JPEG files.



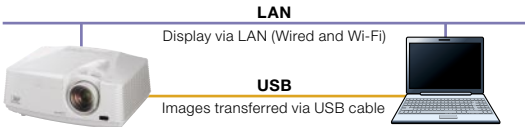
### Remote Desktop

When using the LAN Display function, a USB mouse or USB keyboard can be connected to the projector enabling direct access to a computer utilizing the Internet or other application.



### USB Display/LAN Display

To use the projector to reproduce images from a computer, a USB cable, LAN cable or commercially available wireless dongle can be used. For displaying images via a LAN, up to four computers can be connected to one projector. The projection screen can be divided into quarters, reproducing all computer screens simultaneously.



Notes:

- 1) Only one optional USB Type-A port from a computer can be directly connected to a projector. Multiple connections using a USB hub is not possible.
- 2) For displaying images via a LAN, network settings are required.
- 3) Not all USB dongles are compatible.

### Network Connectivity

Projectors are equipped with a RJ-45 LAN terminal for remote operation. Additionally, when used with Crestron RoomView™, integrated control of up to 250 projectors including power on/off control, message display and confirmation of lamp service hours is possible. Mitsubishi Electric 700 series are equipped with AMX Device Discovery for simplified device management and compatible with PJLink™.



The trademark of PJLink is trademark applied for registration or registered trademark in Japan, the United States, and other countries and areas.