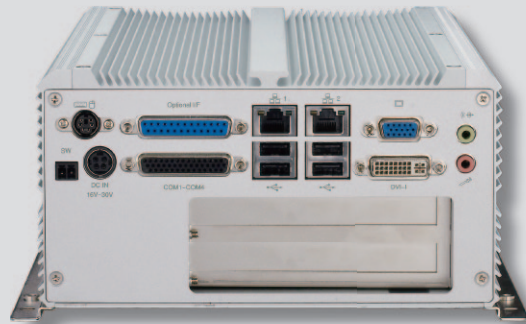


# NISE 3140P2/3140P2E

Intel® Core™ 2 Duo Fanless System  
with 2 x Expansion Slots



## Main Features

- ♦ Support Intel® Core™ 2 Duo / Celeron® processor
- ♦ Intel® GM45 chipsets
- ♦ Dual Intel® 82574L Gigabit Ethernet ports
- ♦ Dual VGA or VGA/DVI Independent Display
- ♦ 3 x RS232 and 1 x RS232/422/485 with Auto Direction Control
- ♦ One external locked CF socket
- ♦ On-board DC to DC power design to support 16V to 30V DC power input
- ♦ Support ATX power mode and PXE / WOL / LAN Teaming

## Product Overview

Utilizing the Intel® GM45 chipsets, NISE 3140 is highly scalable supporting a wide variety of Intel® Core™ 2 Duo and Celeron® processors. Using the Intel® graphics media accelerator 4500MHD, the rugged NISE 3140 delivers exceptional graphics performance with notable rates of data transfer.

NISE 3140 provides a number of important features required by image processing operation, including dual-channel DDR3 memory, two Gigabit Ethernet LANs, auto-direction control on RS485 interface. On top of that, NISE 3140 supports dual independent displays through 2x VGA, DVI or LVDS outputs. Housed in a robust aluminum chassis, NISE 3140 of fanless design offers noise-free, ultra reliable operating in the most demanding of industrial environment.

The NISE 3140 series is an idea system for industrial automation, machine automation, Automated Optical Inspection (AOI), visual inspection, video surveillance, image mapping and face recognition markets.

## Specifications

### Main Board

- ♦ NISB 3140
- ♦ Support Intel® Core™ 2 Duo Processor P8400 (3M Cache, 2.26 GHz, 1066 MHz FSB)
- ♦ Support Intel® Celeron® Processor 575 (1M Cache, 2.00 GHz, 667 MHz FSB)

### Main Memory

- ♦ 2 x 240-pin DIMM, up to 4GB DDR3 800/1066 MHz SDRAM, un-buffered and non-ECC

### Chipset

- ♦ Intel® GM45 Graphics and Memory Controller Hub
- ♦ Featuring the Mobile Intel® Graphics Media Accelerator 4500MHD
- ♦ Intel® 82801IBM I/O Controller Hub

### I/O Interface-Front

- ♦ ATX power on/off switch
- ♦ HDD Access/Power status LEDs
- ♦ 1 x Front Access CF Card Socket
- ♦ 2 x USB2.0 ports

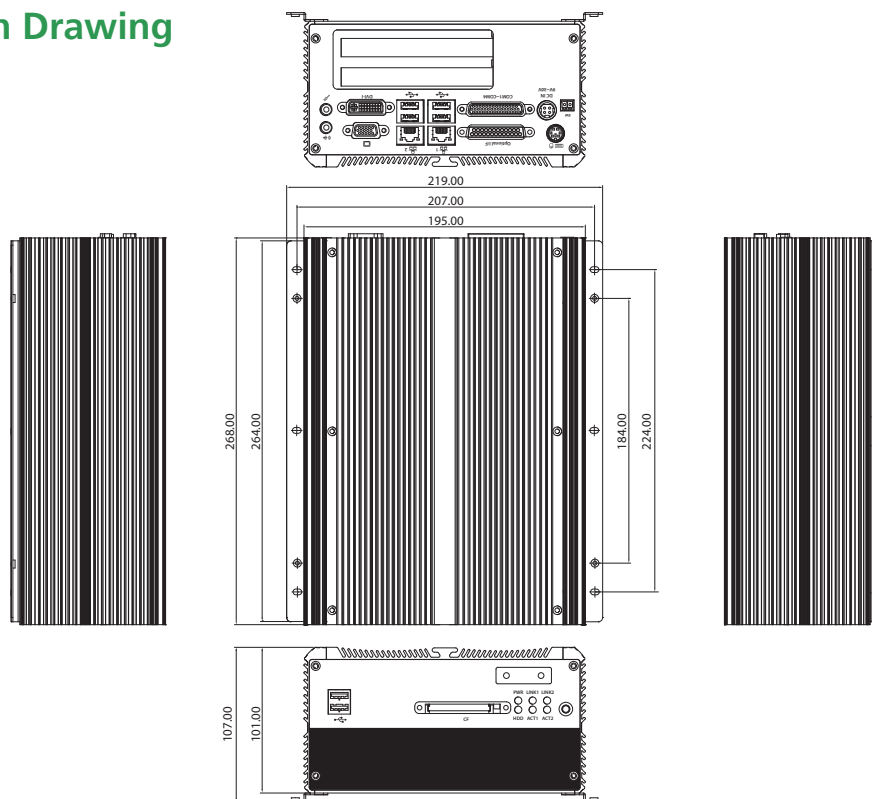
### I/O Interface-Rear

- ♦ 2-pin Remote Power on/off switch
- ♦ 16 ~ 30V DC input
- ♦ 1 x PS/2 for Keyboard/Mouse
- ♦ 1 x DB25 Parallel Port (Optional GPIO or LVDS interface)
- ♦ 1 x DB44 Serial Port for 4x RS232 (COM2: RS232/422/485 with Auto Flow Control)
- ♦ 2 x GbE LAN ports
- ♦ 4 x USB2.0 ports
- ♦ 1 x DB15 VGA port
- ♦ 1 x DVI-I Port (DVI-D + VGA)
- ♦ 1 x Speaker-out and Mic-in

### Device

- ♦ 1 x 2.5" SATA HDD drive bay
- ♦ One external locked CF card socket
- ♦ Optional power adapter

## Dimension Drawing



### Expansion

- Two PCI expansion (NISE3140P2 only)
- One PCI and one PCIe x1 expansion (NISE3140P2E only)
- Add-on card length support:  
Max. 169mm x 1 and 240mm x 1 (with 2.5" HDD installed)  
Max. 240mm x 2 (without 2.5" HDD installed)

### Power Requirements

- ATX power mode
- On-board DC to DC power support from 16V to 30V DC

### Dimensions

- 195mm (W) x 268 mm (D) x 101mm (H) (7.7" x 10.5" x 3.98")

### Construction

- Aluminum Chassis with fanless design

### Environment

- Operating temperature:  
Ambient with air flow: -5°C ~ - 55°C  
(According to IEC60068-2-1, IEC60068-2-2, IEC60068-2-14)
- Storage temperature: -20°C ~ 80°C
- Relative humidity: 10% to 93% (Non-Condensing)

### Certifications

- CE approval
- FCC Class B

## Ordering Information

### Barebone

- **NISE 3140P2 (P/N: 10J00314002X0) RoHS Compliant**  
Intel® Core™ 2 Duo / Celeron® Fanless Bare-Bone system with two PCI Expansion
- **NISE 3140P2E (P/N: 10J00314003X0) RoHS Compliant**  
Intel® Core™ 2 Duo / Celeron® Fanless Bare-Bone system with one PCI and one PCIe x 1 Expansions
- **19V, 120W AC/DC power adapter w/o power cord (P/N: 7410120002X00)**