

# TC-361

## 24" semi-rugged touch display



24" semi-rugged touch display with WUXGA resolution for naval and shelter applications

### Compact semi-rugged design

The TC-361 is Barco's 24" touch screen display with a medium ruggedization level. Its exceptionally slim display design and low weight make the TC-361 perfectly suited for non-critical naval applications as well as ground mobile and fixed shelters.

### Superior image quality

The TC-361 features WUXGA resolution (1920 x 1200) and offers excellent performance in terms of image crispness, contrast, and viewing angle. Equipped with highly efficient LED backlights, Barco's TC-361 offers a long lifetime and reduces power consumption.

### High-accuracy touch screen

The TC-361 features an analog-resistive touch screen, allowing fluent drag and drop actions with finger tips, gloves or stylus. The analog-resistive touch technology excels with high touch accuracy, dust and water resistance.

**BARCO**

Visibly yours

# TC-361

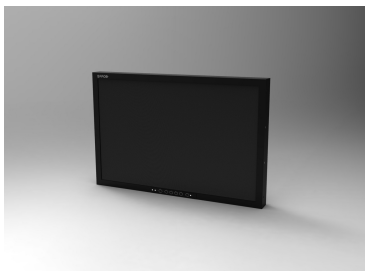
## 24" semi-rugged touch display



### Flexible display performance

Designed with **dual DVI and dual VGA inputs**, combined in two DVI-I connectors, the TC-361 provides the flexibility to support both new and legacy systems and allows switching between multiple inputs with the touch of a button.

The TC-361 accepts input timings up to 1920x1200 and offers **3 scaling modes**: normal, save aspect ratio (SAR), and no scaling.



## Technical specifications

## TC-361

<b>Screen size</b>	24"
<b>Display size</b>	559,05 x 364,74 x 70,87 mm (wxhxd)22,01 x 14,36 x 2,79 inch (wxhxd)
<b>Resolution</b>	1920 x 1200
<b>Brightness</b>	320 cd/m <sup>2</sup>
<b>Contrast ratio</b>	1000:1
<b>Aspect Ratio</b>	16:10
<b>Backlight</b>	LED
<b>Viewing angle</b>	+/- 89° horizontal +/- 89° vertical
<b>Inputs</b>	2 x DVI-I female
<b>Scaling modes</b>	SAR Mode: max resolution, maintains aspect ratio (default) Normal: fill screen, does not maintain aspect ratio No Scale: resolution and aspect ratio = source
<b>Power consumption</b>	40W typ.
<b>Power Supply</b>	AC input 100-240 VAC 47-63Hz
<b>USB</b>	Type B connector for touch screen communication
<b>Bezel controls</b>	Input selection / Up / Down / Enter / Exit / Standby in conjunction with OSD
<b>Touch screen</b>	Anti-reflective, analog-resistive touch screen
<b>Vibration</b>	Air transport C-17 according MIL-STD-810F fig 514.5C-6 and table 514.5C-VIII Composite Wheeled Vehicle according MIL-STD-810F fig 514.5C-3 and table 514.5C-VII up to 200Hz
<b>Shock</b>	MIL-STD-810F 10G peak, 11 msec ½ sine wave
<b>Operating temperature</b>	0°C to +50°C
<b>Storage temperature</b>	-20°C to +60°C
<b>Operating humidity</b>	5 to 85% relative, non-condensing
<b>Altitude</b>	Sea level to 10,000 ft (non-operating altitude: sea level to 40,000 ft)
<b>EMI / EMC</b>	MIL-STD-461E tailored to ground support equipment for Fixed Navy and Air Force equipment
<b>Electrostatic discharge</b>	IEC 61000-4-2 (Case 2)