

PG-D3510/3010/2710/2500X



The PG-D3510X, PG-D3010X, PG-D2710X and PG-D2500X are identical in front, top and side cabinet appearance with the exception of the model number indication.

Optional Accessories

Lamp



AN-D350LP

Note: Some of the optional accessories may not be available depending on the region. Please check with your nearest Sharp Authorized Projector Dealer or Service Center.

Specifications

Models	PG-D3510X	PG-D3010X	PG-D2710X	PG-D2500X
Display devices	0.55" DLP [®] chip x 1			
Resolution	XGA (1,024 x 768)			
Brightness	3,500 ANSI lumens	3,000 ANSI lumens	2,700 ANSI lumens	2,500 ANSI lumens
Contrast ratio	2,000:1			
Lens	F number			
	Zoom			
	Focus			
Picture size	40" (102 cm) to 300" (762 cm)			
Projection distance	40" (1.4 to 1.7 m), 100" (3.5 to 4.2 m), 300" (10.4 to 12.6 m)			
Input signals	Computer RGB			
	DTV			
Input terminals	Computer / Component (mini D-sub 15 pin)	2		1
	S-Video (mini DIN 4 pin)		1	
	Video (RCA)		1	
	Audio (ø3.5mm stereo minijack)		1	
	Audio (RCA)		1 (L/R)	
Output terminals	Computer / Component (mini D-sub 15 pin)	1 (Shared with computer / computer input 2, switchable)		1
	Audio (ø3.5mm stereo minijack)	1 (variable audio output)		—
Control and communication terminals	LAN (RJ-45)	1		
	USB (Type B)		1	
	RS-232C (mini D-sub 9 pin)		1	
Horizontal frequency	15 to 110 kHz			
Vertical frequency	45 to 85 Hz			
Speakers	7 W (mono)			
Fan noise	38 dB (Eco+Quiet Off), 30 dB (Eco+Quiet On)		34 dB (Eco+Quiet Off), 30 dB (Eco+Quiet On)	
Projection lamp	250 W		210 W	
Lamp life	4,000 hours (Eco+Quiet)			
On-screen display languages	English, German, Spanish, Dutch, French, Italian, Swedish, Portuguese, Russian, Polish, Hungarian, Turkish, Arabic, Persian, simplified Chinese, Korean, Japanese			
Rated voltage	AC100 to 240V			
Rated frequency	50 / 60Hz			
Input current	3.2 A		2.8 A	
Power consumption	Eco + Quiet Off		Eco + Quiet On	
	322 W with AC 100V, 309 W with AC 240V		215 W with AC 100V, 210 W with AC 240V	
	Standby mode Quick Start		Eco	
4.4 W with AC 100V, 5.2 W with AC 240V		0.32 W with AC 100V, 0.77 W with AC 240V		
Operation temperature	41°F to 95°F (+5°C to +35°C)			
Cabinet	Plastic			
Dimensions (main body only) W x H x D	300 x 79 x 236 mm			
Weight (approx.)	2.8 kg			
Supplied accessories	Remote control, Two R-6 batteries, Power cord (6' (1.8 m)), RGB cable (10' (3.0 m)), Operation manual, CD-ROM, DIN-D-sub RS-232C adaptor ^{**} , Storage case ^{**}			

Design and specifications are current as of January 2010, but are subject to change without notice.

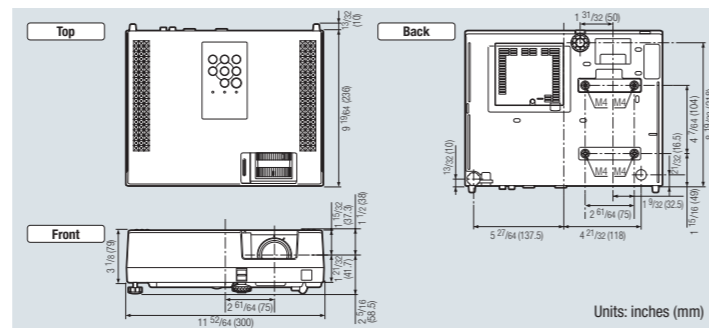
* Compatible in intelligent compression ** Except PG-D2500X.

• DLP[®] and the DLP logo are registered trademarks of Texas Instruments, and BrilliantColor[™] is a trademark of Texas Instruments. • All company and/or product names are trademarks and/or registered trademarks of their respective manufacturers. Sharp makes no warranties or representations of any kind with respect to these products. • The lamp life may vary depending on the usage condition. • Brightness values indicate overall average values of the product at the time of shipment and are stated based on ISO 2118-2005.

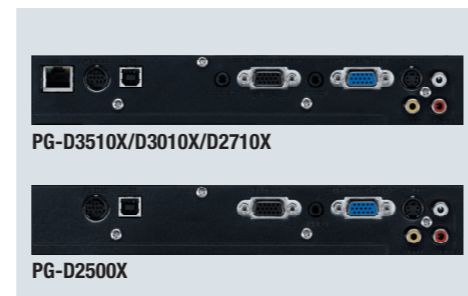


Sharp Electronics Central & Eastern Europe, a division of Sharp Europe
A-1020 Vienna, Handelskai 342, Phone: +43 / (0)1 / 7 27 19 - 0
Fax: +43 / (0)1 / 7 27 19 - 141, e-mail: marketing@scee.sharp-eu.com
more info under: www.sharp-cee.com

Dimensions (PG-D3510/3010/2710/2500X)



Rear terminals



PG-D3510X/D3010X
D2710X/D2500X
True XGA Data Projectors



Easy-to-use, sleek and compact, these 3D-ready projectors offer brilliant image quality in an ecologically friendly design for versatile school and business use



New 3D-ready Sharp projectors offer advanced features, quick and easy operation, and a compact and environmentally friendly design for crystal clear projection in a wide range of business and education applications

High-Quality Picture

NEW

3D Ready

Make sure your projector is ready to be used for new 3D content. Incorporating DLP® Link™ technology, the projector captivates audiences with breathtaking 3D imagery.



High Brightness

Sharp's advanced optoelectronics technology maximizes light output, providing crystal clear images in high brightness of 3500, 3000, 2700 and 2500 lumens for the PG-D3510X, PG-D3010X, PG-D2710X and PG-D2500X, respectively.

3D-ready Specifications

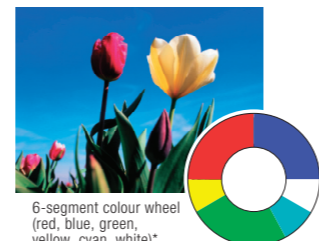
The projector provides 3D support with both 60 Hz and 120 Hz XGA (1,024 x 768) and SVGA (800 x 600) sources (which is compatible with 3D field-sequential content). Active shutter 3D glasses that support the DLP® Link™ system are required (sold separately). For additional information about the DLP® Link™, visit <http://www.dlp.com/projector/dlp-innovations/3d-ready.aspx>

BrilliantColor™ Technology with Six-Segment Colour Wheel*

BrilliantColor™ Technology improves picture brilliance particularly for intermediate colours, providing natural, detailed images. Sharp has also developed a 2x Speed Colour Wheel with six colour segments including yellow and cyan added to red, green, blue, and white. With Sharp's unique colour matching technology and these six colour combinations, images can be reproduced with highly realistic colours.



4-segment colour wheel (red, blue, green, white)



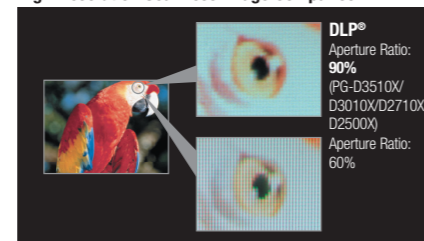
6-segment colour wheel (red, blue, green, yellow, cyan, white)*

* 5-segment colour wheel (red, blue, green, white, cyan) for PG-D3510

DLP® Digital Image

Using a DLP® chip, each pixel is individually composed of one of over a half a million micromirrors to produce a high resolution, and the micromirrors lie

High-Resolution Seamless Image Comparison*



DLP® Aperture Ratio: 90% (PG-D3510X/D3010X/D2710X/D2500X) Aperture Ratio: 60%

at a distance of merely one micron, providing a seamless finely detailed picture. Also, high-speed on/off switching delivers smooth moving scenes.

Convenience and Reliability

Compact File-Size Body

The slim design with 79-mm thickness makes it easy to carry, set up and store. The volume is 12% smaller than conventional models.

Sliding Lens Cover

The lens cover can be slid closed to protect the lens from dust and damage while the projector is not being used. It is possible to completely close the lens cover and interrupt the projection with the power still on. If the lens cover is kept closed for 30 minutes, the projector turns off automatically for safety.



The photos are for the PG-D3510X.

Lamp Replacement System



You can exchange the lamp easily and safely even when the projector is mounted on the ceiling or in another high location.

Safe Lamp Housing Structure

When the lamp is removed from the projector for replacement, the internal lamp shutter door automatically closes, ensuring safe replacement in the event that the lamp breaks.

Filter-Free Design

When the projector is being used, the lamp door remains open, and the lamp heat burns off dust, so there is no need to worry about filter clogging or costs for filter replacement. The sealed DLP chip with filter-free design helps ensure lower maintenance and operating costs.

Security Bar



A reinforcing bar for the antitheft cable is mounted at the corner of the projector for theft prevention.

Easy and Convenient Presentation Operations

1.2x Optical Zoom

The dynamic zoom delivers large-screen projection in a short distance, for example, 100" projection from 3.5 m to 4.2 m. This makes large projection easy in any size of room.

High-Output Speaker

Enjoy clear audio with 7 W of power from videos or other sources without troublesome connections to audio devices.

Quick Start

It takes only approx. 5 seconds to project the image.

Direct Power Off

Direct Power Off lets users unplug the projector and take it from the location without waiting for it to cool down. In addition, it also helps control the power simultaneously for multiple projectors by allowing use of the room's primary power switch and the projector's auto restart function.

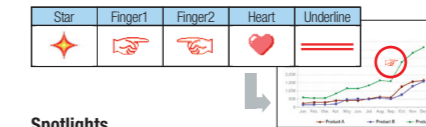
Remote Control with GUI Pointer and Spotlight

Five different icons can be displayed to effectively use for your presentations.

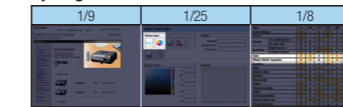
Three spotlight sizes, ranging from 1/25, 1/9 or 1/8 the screen, provide visual effects to focus on the specified subject. Also, the remote control range is increased to 10 m, 40% longer than conventional models.



Pointer Icons



Spotlights



- 4:3 and 16:9 Aspect Ratios and HDTV/DTV and DVD Compatible (1080P, 1080i, 720P, 576P, 576i, 540P, 480P and 480i).
- Image Shift Function
Images projected in wide format can be vertically shifted for better viewing in limited spaces.
- Theft Deterrent Function "System Lock"
- Keylock Function
- 30 dB Low Fan Noise (Eco+Quiet Mode)
- Standby power: 0.77 W (Standby Mode: Quick Start)
- Wall Colour Screen Adjustment
For use with whiteboards and blackboards
- 1080i IP conversion

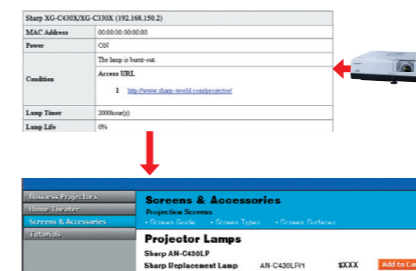
Sharp's Unique Network System*

Web Browser Control

Web browser control enables remote access and management of the projector by utilizing built-in firmware without the need for additional special software.

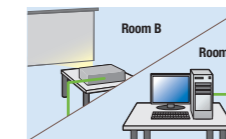
Link to a Specific Website for Service and Support

The projector can be registered to a specific website for maintenance service and support. For example, the projector can send an error message, such as to notify that the lamp is burnt out, to a web address automatically selected. The address accessed for maintenance is also shown on the display.



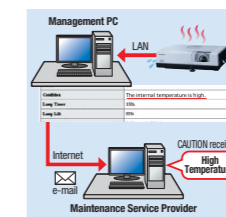
Remote Access for Control and Adjustment

Projector control functions, including power on, input select, volume, and AV mute, can be controlled and adjusted by a computer even in another room.



Diagnosis and Auto Email Alert

Email is automatically sent to appointed addresses when detecting an error message, such as the lamp going out, unusual heating or cooling fan breakdown.



Control with Downloadable Display Manager

A greater variety of network projector control options can be used when the Sharp Display Manager* is installed on the main computer.

*Sharp Display Manager can be downloaded from the Sharp Global Home Page for free. Sharp Global Homepage URL: <http://sharp-world.com/projector/>

- Remote Access for Multiple and Group Projector Control
- Periodic/Error Diagnosis and Auto Email Alert
- Theft Detection and Message (Network Surveillance System)

PJLink™ Capability

The PG-D3510X, PG-D3010X and PG-D2710X are compatible with devices that support PJLink™, enabling systems to be easily built for centralized management and operation using a controller. For additional information about the PJLink™, visit <http://pjlink.jbma.or.jp/english/>

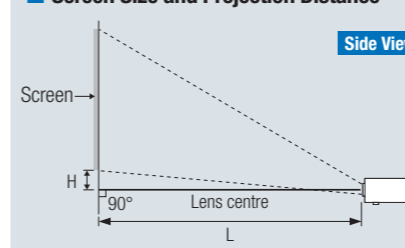
Control System Compatibility

The PG-D3510X, PG-D3010X and PG-D2710X provide superior compatibility with various control systems such as Crestron, AMX and Extron.



* PG-D3510X/D3010X/D2710X only

Screen Size and Projection Distance



4:3 Signal Input (Normal Mode)

Picture size	Projection distance [L]			Distance from the bottom of the image to the lens centre [H]
	Diag.	Width (cm)	Height (cm)	
300"	240"(610)	180"(457)	340"(8.4m)	41'3"(12.6m)
200"	160"(406)	120"(305)	22'8"(6.9m)	27'6"(8.4m)
100"	80"(203)	60"(152)	11'4"(3.5m)	13'9"(4.2m)
60"	48"(122)	36"(91)	6'10"(2.1m)	8'3"(2.5m)
40"	32"(81)	24"(61)	4'6"(1.4m)	5'6"(1.7m)

16:9 Signal Input (16:9 Mode)

Picture size	Projection distance [L]			Distance from the lens centre to the bottom of the image [H]	Adjustable range of image position [H]
	Diag.	Width (cm)	Height (cm)		
300"	261"(664)	147"(374)	371"(9.3m)	44'11"(13.7m)	32'13/32"(82cm)
200"	174"(443)	98"(249)	24'9"(7.5m)	29'11"(9.1m)	±16'11/32"(±42cm)
100"	87"(221)	49"(125)	12'4"(3.8m)	15'0"(4.6m)	±8'11/64"(±21cm)
60"	52"(133)	29"(75)	7'5"(2.3m)	9'0"(2.7m)	±4'29/32"(±12cm)
40"	35"(89)	20"(50)	4'11"(1.5m)	6'0"(1.8m)	±3'17/64"(±8cm)

* Allow a margin of error in the above values.