



FD630U – Full HD



WD620U – WXGA



XD600U – XGA

Ultra Bright, User Friendly Projectors;
Ideal for Business and Education applications.

Brighter display solutions

Amazing image quality combined with advanced technological design; introducing the FD630U, WD620U and XD600U.

Mitsubishi Electric, a leading manufacturer of innovative, high quality display solutions has introduced three new ultra bright, mobile projectors. Users can choose from three different resolutions to match their specific installation needs (FD630U, 1080p; WD620U, WXGA; XD600U, XGA). Designed for reliability and durability, these projectors incorporate an array of user-friendly functions and advanced technology features. When it comes to visual communications, the FD630U, WD620U and XD600U offer a good balance between cost and features.



Ecological & Cost-efficient

Stand-by Mode under 1W

When in stand-by (low) mode, the power consumption is less than 1W, enabling increased energy savings and further contributing to environmental preservation.

Long 5,000hr Lamp Life

By increasing the estimated lamp life, we've reduced maintenance and operating costs.

Filter-free design

DLP™ projectors are structurally airtight, eliminating the need for an intake filter. The filter free design also reduces dirt and dust particles from entering the projector, minimising service issues.

Exceptionally Quiet

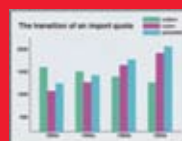
Silent 29dBA Operation

The FD630U, WD620U and XD600U operate at just 29dBA, making these projectors virtually silent for undisrupted presentations.

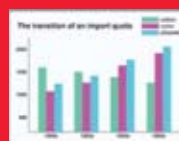
Clear, Vivid Images

High brightness and high contrast

Ideal for large meeting rooms and conference halls, these projectors offer a high brightness of 4500 ANSI lumens and a high contrast level of 2000:1.



3000m



4500m

High-power projection – Distance increased 1.5x

The FD630U, WD620U and XD600U are equipped with a specially calibrated lens for high-power projections. A 60" screen is possible from 1.7 to 2.6m (68in to 102in)* away from the screen and brilliant, crystal-clear images are assured even when the projection distance is short.

*XD600U only

Choose from a Variety of Screen Sizes

From XGA to 1080p- Select the Resolution that Best Matches Your Needs.

The trend towards wide-screen televisions and wide-screen computers continues to grow. The FD630U and WD620U projectors offer wide-aspect ratios suitable for displaying wide-screen content without distorting or

compressing the image. Additionally, switching from an XGA projector to a WXGA projector increases the display screen area by 1.3. What's more, upgrading to a 1080p projector gives a screen area that is 2.3 times larger compared to XGA.



XGA



WXGA



1080p



An Array of Convenient Functions

Top-loading lamp for easier maintenance

The projection lamp is installed in the upper section of the main body. Whether sitting on a shelf or suspended from the ceiling, lamp replacements are made simple and easy, and there is never a need to move the whole projector. A lamp replacement attachment is included to prevent the lamp from being dropped during exchange.



Loud 10W built-in speaker

A high-volume 10W speaker is built-in, eliminating the need for an external speaker.

Audio Mix functionality

Using the Audio Mix* feature and wireless microphone (sold separately), the presenter's voice is reproduced loud and clear in real-time

*Only compatible with stereo mini-jack.

Not compatible with RCA jack (L/R) or HDMI.

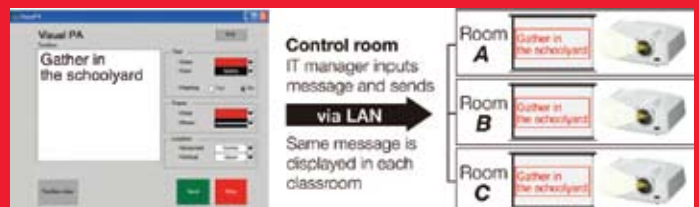


Loud 10W built-in speaker + Audio Mix

Visual PA to broadcast messages

Designed for convenience and utility, the XD600U and WD620U incorporate Visual PA functionality. With this feature, a control room computer, equipped with projector-control software can be used to send simultaneous messages in real time, to a series of projectors connected to the LAN. Messages can be of up to 350 characters long.

The FD630U is equipped with our new Visual PA2 feature, which provides message input/save and voice announcement functions as well. Emergency messages prepared in advance can be sent simultaneously to all projectors connected on the LAN. The software is also capable of changing messages via the keyboard to verbal announcements, increasing the effect of the message. This system is ideal for broadcasting important information to multiple rooms in schools or office buildings.



3D READY*

Experience the impact and allure of 3D images. This projector supports a 3D experience when users input and display their 3D content and watch the display with optional DLP™ link compatible glasses.

*XD600U only

Brighter display solutions

New MOBILE PROJECTOR

FULL HD **FD630U**

WXGA **WD620U**

XGA **XD600U**

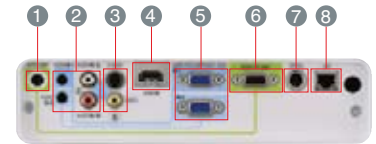


| | | | | | | |
|---------------------|--------------------|-----------------------|-------------|----------------------|----------------|------------------|
| Brilliant Color™ | Color Enhancer | Wall Screen | 10W Speaker | User Logo Projection | Password Lock | Instant Shutdown |
| Long-life Lamp | Low Stand-by Power | Top/Side Loading Lamp | LAN (RJ-45) | HDMI | Closed Caption | Low Fan Noise |
| Picture Performance | | Presentation | | User-friendly | | |



Input and Output Terminals

(XD600U/WD620U only)



- 1 Audio output
- 2 Audio input
- 3 S-Video/Video
- 4 HDMI
- 5 PC/Component video input
- 6 Monitor output
- 7 Serial RS-232C
- 8 LAN (RJ-45)

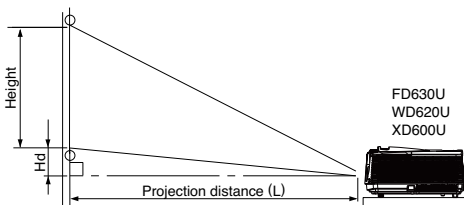
Specifications

| Model | FD630U | WD620U | XD600U |
|------------------------|--|---|---|
| Display technology | 0.65" 1-chip DMD | 0.65" 1-chip DMD | 0.7" 1-chip DMD |
| Resolution | 1920 x 1080 (total 2,073,600 pixels) | 1280 x 800 (total 1,024,000 pixels) | 1024 x 768 (total 786,432 pixels) |
| Brightness | 4000lm | 4000lm | 4500lm |
| Contrast ratio | 2000 : 1 | 2000 : 1 | 2000 : 1 |
| Picture size | 40" - 300" | 40" - 300" | 40" - 300" |
| Throw ratio | 1.4 - 2.1 | 1.5 - 2.2 | 1.4 - 2.1 |
| Source lamp | 230W (shut-off time 5000hr) in low mode, 280W (shut-off time 3000hr) in standard mode | | |
| PC compatibility | 640 x 480 - 1920 x 1200, True : 1920 x 1080, sync on green available | 640 x 480 - 1280 x 1024, True : 1280 x 800, sync on green available | 640 x 480 - 1280 x 1024, True : 1024 x 768, sync on green available |
| Video compatibility | NTSC / NTSC 4.43 / PAL (including PAL-M, N) / SECAM / PAL-60 Component video; 480i/p (525i/p), 576i/p (625i/p), 720p (750p), 1080i (1125i 50/60Hz), 1080p (1125p 50/60Hz) | NTSC / NTSC 4.43 / PAL (including PAL-M, N) / SECAM / PAL-60 Component video; 480i/p (525i/p), 576i/p (625i/p), 720p (750p), 1080i (1125i 50/60Hz) | |
| Input terminals | RGB; mini D-sub 15pin x 2 Video; RCA x 1, S-VIDEO x 1 Digital; HDMI x 1 Audio; stereo mini jack (ø3.5mm) x 2, RCA jack (L/R) x 1 | | |
| Output terminals | RGB; mini D-sub 15pin x 1 Audio; stereo mini jack (ø3.5mm) x 1 | | |
| Communication terminal | RS-232C; mini DIN 8pin x 1 LAN; RJ-45 x 1 | | |
| Audio speaker | 10W mono | | |
| Dimensions (W x H x D) | 345 x 129 x 270 mm / 13.6 x 5.1 x 10.6 inch | | |
| Weight | 3.8kg / 8.3lbs | 3.6kg / 7.9lbs | |
| Power requirements | AC 100-240V, 50/60Hz | | |
| Optional lamp | VLT-XD600LP | | |

• Compliance with ISO21118-2005 • All brand names and product names are trademarks, registered trademarks or trade names of their respective holders

Screen Size and Projection Distance

Side view



The above numbers are approximate, and may be slightly different from the actual measurements.

Screen size chart (FD630U)

| Diagonal size | Screen (16 : 9) | | | | Distance from screen (L) | | | | Height projected image (Hd) | | |
|---------------|-----------------|-----|------|-----|--------------------------|-----|------|-----|-----------------------------|------|-----|
| | inch | cm | inch | cm | inch | m | inch | m | inch | cm | |
| 40 | 102 | 35 | 89 | 20 | 50 | 47 | 1.2 | 71 | 1.8 | 6.6 | 17 |
| 60 | 152 | 52 | 133 | 29 | 75 | 71 | 1.8 | 107 | 2.7 | 9.9 | 25 |
| 80 | 203 | 70 | 177 | 39 | 100 | 96 | 2.4 | 144 | 3.6 | 13.2 | 34 |
| 100 | 254 | 87 | 221 | 49 | 125 | 120 | 3.1 | 180 | 4.6 | 16.5 | 42 |
| 150 | 381 | 131 | 332 | 74 | 187 | 182 | 4.6 | 271 | 6.9 | 24.7 | 63 |
| 200 | 508 | 174 | 443 | 98 | 249 | 243 | 6.2 | 362 | 9.2 | 33.0 | 84 |
| 250 | 635 | 218 | 553 | 123 | 311 | 304 | 7.7 | 453 | 11.5 | 41.2 | 105 |
| 300 | 762 | 261 | 664 | 147 | 374 | 365 | 9.3 | - | - | 49.5 | 126 |

Screen size chart (WD620U)

| Diagonal size | Screen (16 : 10) | | | | Distance from screen (L) | | | | Height projected image (Hd) | | |
|---------------|------------------|-----|------|-----|--------------------------|-----|------|-----|-----------------------------|------|-----|
| | inch | cm | inch | cm | inch | m | inch | m | inch | cm | |
| 40 | 102 | 34 | 86 | 21 | 54 | 48 | 1.2 | 72 | 1.8 | 6.2 | 16 |
| 60 | 152 | 51 | 129 | 32 | 81 | 73 | 1.9 | 110 | 2.8 | 9.2 | 23 |
| 80 | 203 | 68 | 172 | 42 | 108 | 98 | 2.5 | 147 | 3.7 | 12.3 | 31 |
| 100 | 254 | 85 | 215 | 53 | 135 | 123 | 3.1 | 184 | 4.7 | 15.4 | 39 |
| 150 | 381 | 127 | 323 | 79 | 202 | 186 | 4.7 | 277 | 7.0 | 23.1 | 59 |
| 200 | 508 | 170 | 431 | 106 | 269 | 248 | 6.3 | 370 | 9.4 | 30.8 | 78 |
| 250 | 635 | 212 | 538 | 132 | 337 | 311 | 7.9 | 463 | 11.8 | 38.5 | 98 |
| 300 | 762 | 254 | 646 | 159 | 404 | 373 | 9.5 | - | - | 46.2 | 117 |

Screen size chart (XD600U)

| Diagonal size | Screen (4 : 3) | | | | Distance from screen (L) | | | | Height projected image (Hd) | | |
|---------------|----------------|-----|------|-----|--------------------------|-----|------|-----|-----------------------------|------|----|
| | inch | cm | inch | cm | inch | m | inch | m | inch | cm | |
| 40 | 102 | 32 | 81 | 24 | 61 | 45 | 1.1 | 67 | 1.7 | 3.6 | 9 |
| 60 | 152 | 48 | 122 | 36 | 91 | 68 | 1.7 | 102 | 2.6 | 5.4 | 14 |
| 80 | 203 | 64 | 163 | 48 | 122 | 91 | 2.3 | 137 | 3.5 | 7.2 | 18 |
| 100 | 254 | 80 | 203 | 60 | 152 | 115 | 2.9 | 171 | 4.3 | 9.0 | 23 |
| 150 | 381 | 120 | 305 | 90 | 229 | 173 | 4.4 | 258 | 6.5 | 13.5 | 34 |
| 200 | 508 | 160 | 406 | 120 | 305 | 231 | 5.9 | 344 | 8.7 | 18.0 | 46 |
| 250 | 635 | 200 | 508 | 150 | 381 | 289 | 7.3 | 431 | 10.9 | 22.5 | 57 |
| 300 | 762 | 240 | 610 | 180 | 457 | 348 | 8.8 | - | - | 27.0 | 69 |

MITSUBISHI ELECTRIC EUROPE (BENELUX Office)

Nijverheidsweg 23A, 3641 RP Mijdrecht - The Netherlands
Tel: +31 (0)297-282461 Fax: +31 (0)297-283936 - www.MitsubishiElectric.nl

Brighter display solutions